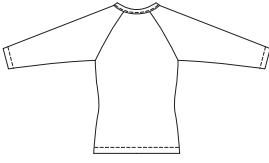
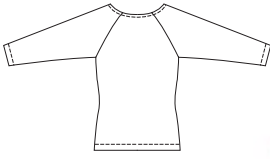


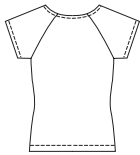
VIEW A Back



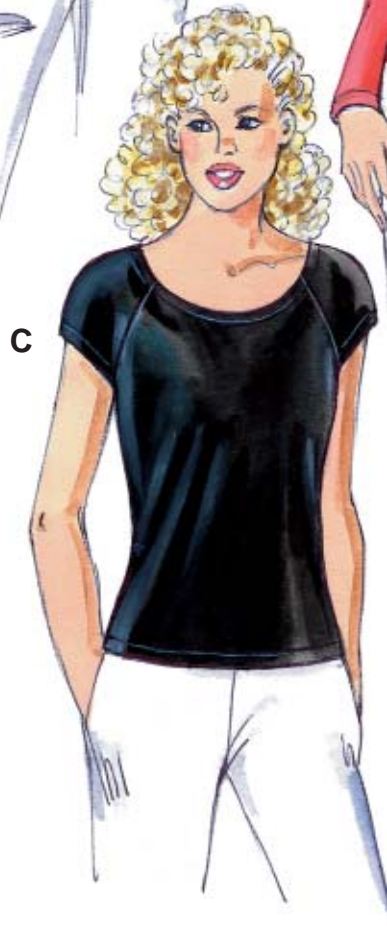
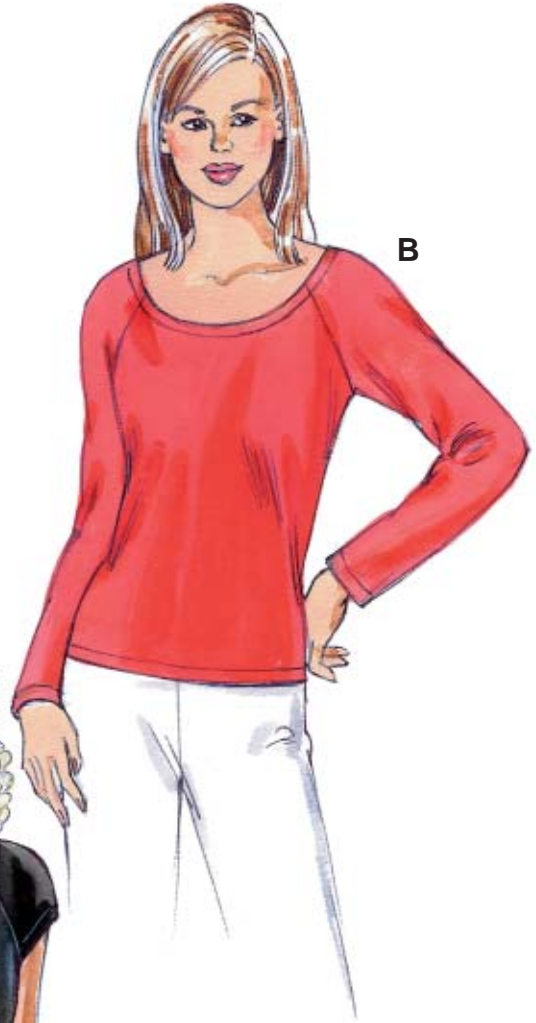
VIEW B Back



VIEW C Back



Misses' close-fitting pullover tops with raglan sleeves. View A has long sleeves, jewel neckline with self fabric neckband, and front slit with eyelets and cording. Views B and C have scoop necklines with self fabric bindings. View B has full-length sleeves and View C has cap sleeves.



**KWIK•SEW®**

**3120** price

**KWIK & EASY**

**MISSES' TOPS**

Sizes: XS-S-M-L-XL

DESIGNED FOR STRETCH KNITS ONLY WITH 25% STRETCH

Suggested Fabrics: Interlock, velour, panne, stretch velvet, stretch lace, textured knits

Size	XS	S	M	L	XL	
<b>Finished Length at Center Back from Natural Neckline</b>						
Views A, B & C	20 3/4 (53)	21 1/4 (54)	21 3/4 (55)	22 1/2 (57)	23 (58)	" (cm)
<b>Material Required:</b> Fabric requirement allows for nap, one-way design or shading. Extra fabric may be needed to match design or for shrinkage.						
<b>Fabric 60" (152 cm) Wide</b>						
View A	1 3/8 (1.30)	1 3/8 (1.30)	1 3/8 (1.30)	1 1/2 (1.40)	1 5/8 (1.50)	yd (m)
View B	1 1/4 (1.15)	1 3/8 (1.30)	1 3/8 (1.30)	1 1/2 (1.40)	1 5/8 (1.50)	yd (m)
View C	1 (0.95)	1 (0.95)	1 (0.95)	1 (0.95)	1 5/8 (1.50)	yd (m)

**Notions:** Thread. VIEW A: Ten eyelets and cord for lacing, scrap piece of fusible interfacing.