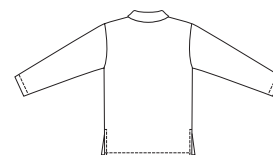


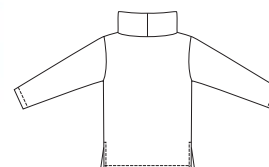


Misses' Pullover Tops with long sleeves and three different necklines. Views A and B have side vents. View A has shawl collar sewn to V-neckline. View B has fold-over wide collar. View C has boat neckline with ribbing neckband.

VIEW A Back



VIEW B Back



VIEW C Back



# KWIK & EASY

**KWIK•SEW®**  
price **3121**

DESIGNED FOR STRETCH KNITS ONLY

Suggested Fabrics: Sweatshirt fleece, French terry, textured knits, Polarfleece®, berber fleece

MISSES' TOPS

Sizes: XS-S-M-L-XL

Size	XS	S	M	L	XL	
<b>Finished Length at Center Back from Natural Neckline</b>						
Views A & B	25 (64)	26 (66)	26 1/2 (68)	27 1/2 (70)	28 1/2 (72)	" (cm)
View C	20 (52)	21 (53)	21 1/2 (55)	22 (56)	22 1/2 (58)	" (cm)
<b>Material Required:</b> Fabric requirement allows for nap, one-way design or shading. Extra fabric may be needed to match design or for shrinkage.						
<b>Fabric 60" (152 cm) Wide</b>						
View A	1 1/2 (1.40)	1 5/8 (1.50)	1 5/8 (1.50)	1 3/4 (1.60)	1 3/4 (1.60)	yd (m)
View B	1 1/2 (1.40)	1 1/2 (1.40)	1 7/8 (1.75)	1 7/8 (1.75)	1 7/8 (1.75)	yd (m)
View C	1 3/8 (1.30)	1 3/8 (1.30)	1 1/2 (1.40)	1 1/2 (1.40)	1 1/2 (1.40)	yd (m)
<b>Fusible Interfacing 24" (60 cm) Wide</b>						
View A	1/4 (0.25)	3/4 (0.70)	3/4 (0.70)	7/8 (0.80)	7/8 (0.80)	yd (m)
<b>Ribbing 28" (70 cm) Wide</b>						
View C	3 (8)	3 (8)	3 (8)	3 (8)	3 (8)	" (cm)
<b>Notions:</b> Thread, scrap piece of fusible interfacing.						