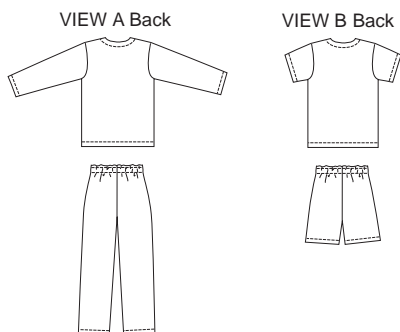


Men's pajamas. Pullover shirt has V-neckline finished with facing, and patch pocket. Pull-on pajama bottoms have fly opening, elastic in casing at waist, and drawstring. Fly has optional button closure. View A has long sleeves and long pants. View B has short sleeves and shorts.



**KWIK-SEW®**  
**3122** price

**KWIK & EASY**

**MEN'S PAJAMAS**

Sizes: S-M-L-XL-XXL

DESIGNED FOR LIGHT TO MEDIUM WEIGHT WOVEN FABRICS

Suggested Fabrics: Cotton types, flannel, chambray, silk types, broadcloth, seersucker

Size	S	M	L	XL	XXL	
<b>Finished Length of Top at Center Back</b>						" (cm)
View A & B	28 (71)	29 (74)	30 (76)	31 (78)	32 (81)	
<b>Finished Inside Leg Seam</b>						
View A	29 1/2" (75 cm) All Sizes					
View B	8 1/2" (22 cm) All Sizes					
<b>Material Required:</b> Fabric requirement allows for nap, one-way design or shading. Extra fabric may be needed to match design or for shrinkage.						
<b>Fabric 60" (152 cm) Wide</b>						
View A	3 3/4 (3.45)	3 3/4 (3.45)	3 7/8 (3.55)	4 1/2 (4.15)	4 3/4 (4.35)	yd (m)
View B	2 5/8 (2.40)	2 5/8 (2.40)	2 3/4 (2.55)	2 7/8 (2.65)	2 7/8 (2.65)	yd (m)
<b>Fabric 45" (115 cm) Wide</b>						
View A	5 1/8 (4.70)	5 1/4 (4.80)	6 (5.50)	6 1/8 (5.60)	6 1/4 (5.75)	yd (m)
View B	3 5/8 (3.35)	3 3/4 (3.45)	4 1/8 (3.80)	4 1/4 (3.90)	4 3/8 (4.00)	yd (m)
<b>Fusible Interfacing 24" (60 cm) Wide</b>						
View A & B	1/4 (0.25)	3/8 (0.35)	3/8 (0.35)	3/8 (0.35)	3/8 (0.35)	yd (m)
<b>Notions:</b> Thread. PANTS & SHORTS: 1 1/2" (4 cm) wide elastic - 1 yd (0.90 m) for sizes S-M-L-XL; 1 1/8 yd (1 m) for size XXL, one draw cord, one 1/2" (12 mm) button (optional).						