



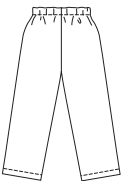
Toddlers' pajamas and tank top. Pajama shirt has long sleeves, front button closure, collar and patch pocket. Pants have side seams and elastic waist. Tank top has neckline and armholes finished with narrow hems.



PAJAMA TOP  
Back



PANTS Back



TANK TOP  
Back



**KWIK•SEW®**  
**3126** price

**KWIK & EASY**

**TODDLERS' SLEEPWEAR**

Sizes: T1-T2-T3-T4

PAJAMAS DESIGNED FOR LIGHTWEIGHT WOVEN FABRICS

Suggested Fabrics: Cotton, cotton types, broadcloth, chambray, flannel, silk like fabrics

TANK TOP DESIGNED FOR STRETCH KNITS ONLY WITH 25% STRETCH

Suggested Fabrics: Interlock, stretch terry, thermal knits, textured knits

Size	T1	T2	T3	T4	
<b>Finished Length of Pajama Top at Center Back</b>	13 1/4 (34)	14 1/4 (36)	15 (38)	16 (40)	" (cm)
<b>Finished Inside Leg Seam</b>	10 (25)	11 1/2 (29)	13 (33)	14 1/4 (36)	" (cm)
<b>Finished Length of Tank Top from Natural Neckline</b>	12 1/4 (31)	13 1/4 (34)	14 1/4 (36)	15 1/4 (38)	" (cm)
<b>Material Required:</b> Fabric requirement allows for nap, one-way design or shading. Extra fabric may be needed to match design or for shrinkage.					
<b>Fabric 60" (152 cm) Wide</b>					
Tank Top	1/2 (0.50)	1/2 (0.50)	1/2 (0.50)	1/2 (0.50)	yd (m)
Pants	5/8 (0.60)	3/4 (0.70)	3/4 (0.70)	7/8 (0.80)	yd (m)
Pajamas	1 (0.95)	1 1/8 (1.05)	1 1/4 (1.15)	1 3/8 (1.30)	yd (m)
<b>Fabric 45" (115 cm) Wide</b>					
Pants	5/8 (0.60)	3/4 (0.70)	3/4 (0.70)	7/8 (0.80)	yd (m)
Pajamas	1 3/8 (1.30)	1 1/2 (1.40)	1 5/8 (1.50)	1 3/4 (1.60)	yd (m)
<b>Fusible Interfacing 24" (60 cm) Wide</b>					
Pajamas	1/2 (0.50)	1/2 (0.50)	1/2 (0.50)	1/2 (0.50)	yd (m)

**Notions:** Thread. PAJAMA TOP: Three 1/2" (13 mm) buttons. PANTS: 5/8 yd (0.60 m) of 3/4" (2 cm) wide elastic.