



Shown with Jacket #3136

Girls' jeans have fly zipper, waistband with belt carriers, back yoke, back patch pockets, front pockets, and a change pocket. View A has straight legs, and View B has flared legs.

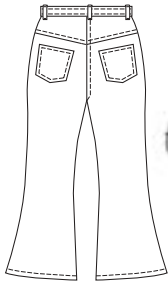
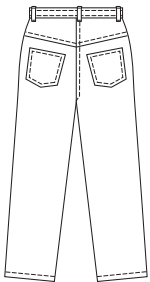


A

B

VIEW A Back

VIEW B Back



KWIK•SEW®

3134

3135 price

GIRLS' JEANS

3134 Sizes: 4-5-6-7

3135 Sizes: 8-10-12-14

DESIGNED FOR MEDIUM WEIGHT WOVEN FABRICS

Suggested Fabrics: Denim, corduroy, twill, cotton, cotton types, linen

Size	4	5	6	7	8	10	12	14	
Finished Inside Leg Seam	15 3/4 (40)	17 1/4 (44)	18 3/4 (48)	20 1/2 (52)	21 3/4 (56)	23 3/4 (61)	25 3/4 (66)	27 3/4 (71)	" (cm)
Material Required: Fabric requirement allows for nap, one-way design or shading. Extra fabric may be needed to match design or for shrinkage.									
Fabric 60" (152 cm) Wide									
View A or B	7/8 (0.80)	7/8 (0.80)	1 (0.95)	1 (0.95)	1 1/8 (1.05)	1 1/4 (1.15)	1 1/4 (1.15)	1 3/8 (1.30)	yd (m)
Fabric 45" (115 cm) Wide									
View A or B	1 (0.95)	1 (0.95)	1 1/8 (1.05)	1 1/4 (1.15)	1 3/4 (1.60)	1 7/8 (1.75)	2 (1.85)	2 1/8 (1.95)	yd (m)
Pocket Lining 45" (115 cm) or 60" (152 cm) Wide									
View A or B	1/4 (0.25)	1/4 (0.25)	3/8 (0.35)	3/8 (0.35)	3/8 (0.35)	3/8 (0.35)	3/8 (0.35)	3/8 (0.35)	yd (m)

Notions: Thread, one 3/4" (20 mm) button, one zipper – 5" (13 cm) for sizes 4-5-6-7; 7" (18 cm) for sizes 8-10-12-14.

NOTE: Purchase suggested length of zipper or longer, zipper will be trimmed.