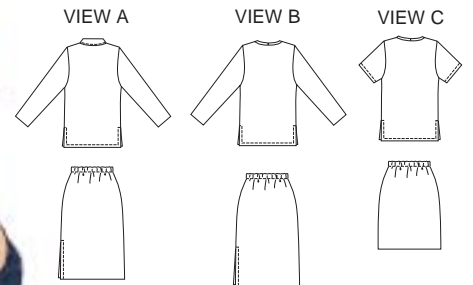




Women's skirts and pullover tops. Tops have bust darts and side hemline slits. View A top has full-length sleeves, collar and front neckline slit. View B and C tops have round neckline finished with self-fabric binding; View B has full-length sleeves, View C has short sleeves. Pull-on skirts in two lengths have elastic at waist. View A and B skirts have side hemline slits on one side.



PLUS SIZE

# PLUS SIZES

**KWIK•SEW**  
price **3137**

DESIGNED FOR STRETCH KNITS ONLY WITH 25% STRETCH

Suggested Fabrics: Interlock, textured knits, stretch velour, jersey, matte jersey, double knit

**WOMEN'S SKIRTS & TOPS**

Sizes: 1X-2X-3X-4X

Size	1X	2X	3X	4X	
Finished Length of Top at Center Back					
View A, B & C	30 (76)	31 (79)	32 (81)	32 3/4 (83)	" (cm)
Finished Length of Skirt					
View A & B	34" (86 cm) – All Sizes				
View C	25" (63 cm) – All Sizes				
<b>Material Required:</b> Fabric requirement allows for nap, one-way design or shading. Extra fabric may be needed to match design or for shrinkage.					
<b>Fabric 60" (152 cm) Wide</b>					
View A & B Skirt & Top	4 (3.70)	4 1/8 (3.80)	4 1/8 (3.80)	4 1/4 (3.90)	yd (m)
View C Skirt	7/8 (0.80)	7/8 (0.80)	1 1/8 (1.05)	1 1/8 (1.05)	yd (m)
View C Top	2 (1.85)	2 (1.85)	2 1/8 (1.95)	2 1/8 (1.95)	yd (m)
<b>Fusible Interfacing 24" (60 cm) Wide</b>					
View A	1/2 (0.50)	1/2 (0.50)	1/2 (0.50)	1/2 (0.50)	yd (m)

**Notions:** Thread, scrap piece of fusible interfacing. SKIRT: 1 1/4 yd (1.15 m) of 1" (2.5 cm) wide elastic.