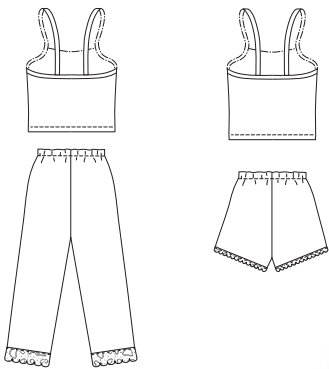




Misses' sleepwear. Pull-on shorts and capri-length pants have elastic at waist, no side seams, and bottom of legs finished with lace. Close-fitting camisole has front neckline finished with lace, and armholes and back finished with self fabric binding. Shoulder straps, back, and armhole bindings are in one piece. View A camisole has curved hemline on front and lace trim on front. View B camisole has straight hemline.

View A Back

View B Back



KWIK•SEW
3143 price

SLEEPWEAR & LINGERIE

MISSES' SLEEPWEAR

Sizes: XS-S-M-L-XL

DESIGNED FOR STRETCH KNITS ONLY WITH 25% STRETCH

Suggested Fabrics: Interlock, pointelle jersey, thermal knit, silk jersey, textured knit, stretch terry

Size	XS	S	M	L	XL	
Finished Length of Camisole at Center Back from Natural Neckline						
View A	18 (45)	18 1/2 (47)	19 (48)	19 1/2 (49)	20 (50)	" (cm)
View B	20 1/4 (51)	21 (53)	21 3/4 (55)	22 1/2 (57)	23 (58)	" (cm)
Finished Inside Leg Seam						
View A	23" (58 cm) – All Sizes					
View B	2" (5 cm) – All Sizes					

Material Required: Fabric requirement allows for nap, one-way design or shading. Extra fabric may be needed to match design or for shrinkage.

Fabric 60" (152 cm) Wide

View A	1 5/8 (1.50)	1 5/8 (1.50)	1 3/4 (1.60)	1 7/8 (1.75)	1 7/8 (1.75)	yd (m)
View B	1 1/8 (1.05)	1 1/8 (1.05)	1 1/8 (1.05)	1 3/8 (1.30)	1 1/2 (1.40)	yd (m)

Notions: Thread. VIEW A CAMISOLE: 1/2 yd (0.50 m) of 3/8"-3/4" (1 cm - 2 cm) wide lace for neckline, lace for center front as desired - 1/2 yd (0.50 m) per row. VIEW A PANTS: 1 yd (0.95 m) of 3/4" (2 cm) wide elastic; 1" - 3" (2 cm - 8 cm) wide lace - 1 1/8 yd (1.05 m) for sizes XS-S, 1 3/8 yd (1.30 m) for sizes M-L-XL. VIEW B CAMISOLE & SHORTS: 3/8"-3/4" (1 cm - 2 cm) wide lace - 1 7/8 yd (1.75 m) for sizes XS-S, 2 1/4 yd (2.10 m) for sizes M-L-XL; 1 yd (0.95 m) of 3/4" (2 cm) wide lace.