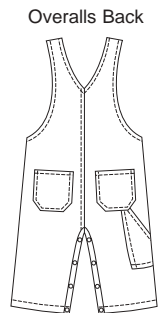




Baby bib overalls and hat. Overalls have fake fly, patch pockets on front, back, and bib, shoulder straps with buckles, side openings with button closure, and snaps on inside legs. Five-panel hat has brim and elastic in back.



**KWIK•SEW®**  
**3145** price

**BABY OVERALLS & HAT**  
 Sizes: S-M-L-XL

DESIGNED FOR MEDIUM WEIGHT WOVEN FABRICS

Suggested Fabrics: Cotton, cotton types, twill, chino, linen, lightweight denim, baby corduroy

Size	S	M	L	XL	
Month	0-3	3-6	6-12	12-18	
Head Circumference	15 (38)	16 1/2 (42)	18 (46)	—	" (cm)
<b>Material Required:</b> Fabric requirement allows for nap, one-way design or shading. Extra fabric may be needed to match design or for shrinkage.					
<b>Fabric 60" (152 cm) Wide</b>					
Overalls & Hat	7/8 (0.80)	7/8 (0.80)	1 (0.95)	1 (0.95)	yd (m)
<b>Fabric 45" (115 cm) Wide</b>					
Overalls & Hat	1 (0.95)	1 1/8 (1.05)	1 1/4 (1.15)	1 1/4 (1.15)	yd (m)
<b>Fabric 60" (152 cm) or 45" (115 cm) Wide</b>					
Hat	1/4 (0.25)	1/4 (0.25)	1/4 (0.25)	1/4 (0.25)	yd (m)
Lining	1/8 (0.15)	1/8 (0.15)	1/8 (0.15)	1/8 (0.15)	yd (m)
<b>Fusible Interfacing 24" (60 cm) Wide</b>					
Hat	1/4 (0.25)	1/4 (0.25)	1/4 (0.25)	1/4 (0.25)	yd (m)
<b>Notions:</b> Thread. OVERALLS: 1 1/4" (3 cm) wide overall buckle set, 2 buttons, snaps for inside leg – 8 for sizes S-M; 10 for sizes L-XL. HAT: Extra wide bias tape, 3" (8 cm) of 3/8" (1 cm) wide elastic.					