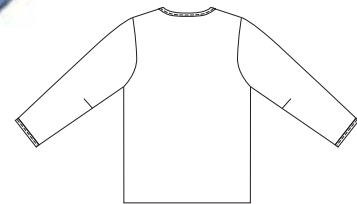
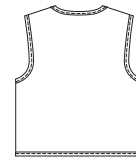


JACKET & VEST

provide a surface for your
Creative Expressions



Women's jacket and vest have contrast fabric lining, button closure on front, and outside edges finished with bias-cut bindings from fabric or contrast fabric. Appliqué shapes are included to help you create your own decorative embellishments.



PLUS SIZE

KWIK•SEW®
3147 price

PLUS SIZES

WOMEN'S JACKET & VEST
Sizes: 1X-2X-3X-4X

DESIGNED FOR LIGHT TO MEDIUM WEIGHT WOVEN FABRICS
Suggested Fabrics: Cotton types, linen, wool, velveteen, brocade, twill, denim.
Contrast Fabric Lining in same or lining type fabrics

Size	1X	2X	3X	4X	
Finished Length at Center Back					
Jacket	28 (71)	28 3/4 (73)	29 1/2 (75)	30 1/4 (77)	" (cm)
Vest	21 3/4 (55)	22 1/2 (57)	23 1/4 (59)	24 (61)	" (cm)
Material Required: Fabric requirement allows for nap, one-way design or shading. Extra fabric may be needed to match design or for shrinkage.					
Fabric and Contrast Fabric 60" (152 cm) Wide – EACH*					
Jacket	1 5/8 (1.50)	2 1/8 (1.95)	2 1/4 (2.10)	2 1/2 (2.30)	yd (m)
Vest	7/8 (0.80)	1 1/8 (1.05)	1 1/4 (1.15)	1 3/8 (1.30)	yd (m)
Fabric and Contrast Fabric 45" (115 cm) Wide – EACH*					
Jacket	2 5/8 (2.40)	2 3/4 (2.55)	2 3/4 (2.55)	2 7/8 (2.65)	yd (m)
Vest	1 1/2 (1.40)	1 1/2 (1.40)	1 1/2 (1.40)	1 5/8 (1.50)	yd (m)
Fabric 45" (115 cm) or 60" (152 cm) Wide					
Jacket Binding	7/8 (0.80)	7/8 (0.80)	1 (0.95)	1 (0.95)	yd (m)
Vest Binding	5/8 (0.60)	3/4 (0.70)	3/4 (0.70)	3/4 (0.70)	yd (m)
Fusible Interfacing 24" (60 cm) Wide					
Jacket	7/8 (0.80)	7/8 (0.80)	7/8 (0.80)	7/8 (0.80)	yd (m)
Vest	5/8 (0.60)	5/8 (0.60)	5/8 (0.60)	5/8 (0.60)	yd (m)

Notions: Thread. JACKET: Four 3/4" (20 mm) buttons. VEST: Three 3/4" (20 mm) buttons.
OPTIONAL APPLIQUÉ EMBELLISHMENTS: Scrap pieces of fabrics, paper-backed fusible web, tear-away material, and trims such as ribbon, braid, lace, or soutache, as desired.

*Does not include binding, be sure to add amount for binding to fabric or contrast fabric requirements.