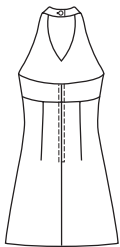
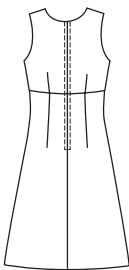


Misses' fitted dresses have empire waist, slightly flared skirt, and zipper at center back. View A has double halter-style bodice with gathers under bust and button closure at back neck. View B has gathers under bust and neckline and armholes finished with facings.

View A Back



View B Back



**KWIK-SEW®**  
**3151** price

**MISSSES' DRESSES**  
 Sizes: XS-S-M-L-XL

DESIGNED FOR LIGHT TO MEDIUM WEIGHT WOVEN FABRICS

Suggested Fabrics: Cotton, cotton types, rayon & blends, crepe, linen, silk, silk types

Size	XS	S	M	L	XL	
<b>Finished Length at Center Back from Natural Neckline</b>						
View A	34 1/2 (88)	35 1/2 (90)	36 (91)	36 1/2 (93)	37 (94)	" (cm)
View B	39 1/2 (101)	40 1/2 (103)	41 (104)	41 1/2 (106)	42 (107)	" (cm)
<b>Material Required:</b> Fabric requirement allows for nap, one-way design or shading. Extra fabric may be needed to match design or for shrinkage.						
<b>Fabric 60" (152 cm) Wide</b>						
View A	1 1/2 (1.40)	1 1/2 (1.40)	1 5/8 (1.50)	1 5/8 (1.50)	1 5/8 (1.50)	yd (m)
View B	1 3/4 (1.60)	1 3/4 (1.60)	1 3/4 (1.60)	1 3/4 (1.60)	1 3/4 (1.60)	yd (m)
<b>Fabric 45" (115 cm) Wide</b>						
View A	1 3/4 (1.60)	2 (1.85)	2 5/8 (2.40)	2 5/8 (2.40)	2 3/4 (2.55)	yd (m)
View B	1 3/4 (1.60)	2 (1.85)	2 5/8 (2.40)	2 3/4 (2.55)	2 3/4 (2.55)	yd (m)
<b>Fusible Interfacing 24" (60 cm) Wide</b>						
View A or B	5/8 (0.60)	3/4 (0.70)	3/4 (0.70)	3/4 (0.70)	7/8 (0.80)	yd (m)
<b>Notions:</b> Thread, one hook & eye set. VIEW A: One 12" (30 cm) zipper. VIEW B: One 20" (50 cm) zipper.						