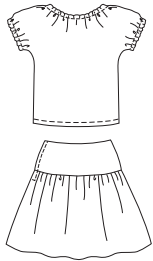
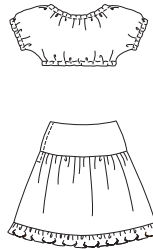




View A Back



View B Back



Misses' skirts and tops. Gathered skirt has fitted yoke with zipper in side seam and optional embellishment on front yoke. View B has ruffle at hemline. Pullover tops have cap sleeves and necklines and armholes finished with elastic in casings. View B is cropped with elastic in casing under bust.

KWIK-SEW®
3152 price

MISSES' TOPS & SKIRTS
 Sizes: XS-S-M-L-XL
TOPS DESIGNED FOR SOFT LIGHTWEIGHT WOVEN FABRICS
 Suggested Fabrics: Gauze, lawn, challis, rayon & blends
SKIRTS DESIGNED FOR LIGHT TO MEDIUM WEIGHT WOVEN FABRICS
 Suggested Fabrics: Cotton, cotton types, linen, challis, broadcloth

Size	XS	S	M	L	XL	
Finished Length of Top from Natural Neckline						
View A	24 1/2 (62)	25 (63)	25 1/2 (65)	26 1/4 (66)	26 3/4 (68)	" (cm)
View B	14 1/2 (37)	15 (38)	15 1/2 (39)	16 (40)	16 (40)	" (cm)
Finished Length of Skirt						
View A	20 1/2 (52)	20 1/2 (52)	20 1/2 (52)	20 1/2 (52)	20 1/2 (52)	" (cm)
View B	21 (53)	21 (53)	21 (53)	21 (53)	21 (53)	" (cm)
Material Required: Fabric requirement allows for nap, one-way design or shading. Extra fabric may be needed to match design or for shrinkage.						
Fabric 60" (152 cm) Wide						
Skirt View A	1 5/8 (1.50)	1 5/8 (1.50)	1 5/8 (1.50)	1 5/8 (1.50)	1 5/8 (1.50)	yd (m)
Skirt View B	2 1/8 (1.95)	2 1/8 (1.95)	2 1/8 (1.95)	2 1/8 (1.95)	2 1/8 (1.95)	yd (m)
Fabric 45" (115 cm) Wide (NOTE: Skirt is cut on crosswise grain)						
Skirt View A	1 3/4 (1.60)	1 3/4 (1.60)	2 3/8 (2.20)	2 3/8 (2.20)	2 3/8 (2.20)	yd (m)
Skirt View B	2 1/8 (1.95)	2 1/4 (2.10)	2 3/8 (2.20)	2 1/2 (2.30)	2 5/8 (2.40)	yd (m)
Fabric 45" (115 cm) or 60" (152 cm) Wide						
Top View A	1 5/8 (1.50)	1 5/8 (1.50)	1 5/8 (1.50)	1 5/8 (1.50)	1 5/8 (1.50)	yd (m)
Top View B	1 (0.95)	1 1/8 (1.05)	1 1/8 (1.05)	1 1/8 (1.05)	1 1/8 (1.05)	yd (m)
Fusible Interfacing 24" (60 cm) Wide						
Skirt View A & B	1/2 (0.50)	1/2 (0.50)	1/2 (0.50)	1/2 (0.50)	7/8 (0.80)	yd (m)
Notions: Thread. TOP View A: 2 yd (1.85 m) of 1/4" (6 mm) wide elastic. TOP View B: 3 1/8 yd (2.85 m) of 1/4" (6 mm) wide elastic. SKIRT: One 7" (18 cm) zipper, one hook & eye set. Optional Appliqué: Scrap pieces of fabric, paper-backed fusible web, tear-away material.						