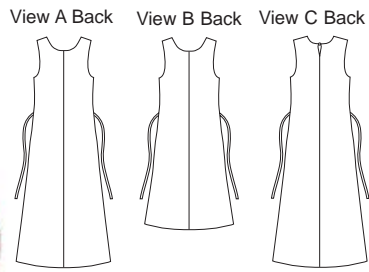




Misses' pullover, slightly A-lined dresses are lined and have narrow ties in side seams that tie in back. Views A & B have scoop necklines. View C has jewel neckline and back slit with button and loop closure.



KWIK•SEW®
price **3160**

DESIGNED FOR LIGHTWEIGHT WOVEN FABRICS
Suggested Fabrics: Chiffon, batiste, voile, lawn, georgette, lace, challis, handkerchief linen
Suggested Lining: Silk, silk-like fabric, charmeuse

MISSES' DRESSES
Sizes: XS-S-M-L-XL

Size	XS	S	M	L	XL	
Finished Length of Dress from Natural Waist						
View A & C	34" (86 cm) All Sizes					
View B	22" (56 cm) All Sizes					
Material Required: Fabric requirement allows for nap, one-way design or shading. Extra fabric may be needed to match design or for shrinkage.						
Fabric 60" (152 cm) Wide						
View A & C Fabric & Lining	1 5/8 (1.50)	1 7/8 (1.75)	2 1/4 (2.10)	2 3/4 (2.55)	2 3/4 (2.55)	yd (m)
View B Fabric & Lining	1 1/4 (1.15)	1 1/4 (1.15)	1 1/4 (1.15)	1 1/2 (1.40)	2 1/8 (1.95)	yd (m)
Fabric 45" (115 cm) Wide						
View A & C Fabric & Lining	2 7/8 (2.65)	3 (2.75)	3 (2.75)	3 (2.75)	3 1/8 (2.85)	yd (m)
View B Fabric & Lining	2 (1.85)	2 1/8 (1.95)	2 3/8 (2.20)	2 3/8 (2.20)	2 3/8 (2.20)	yd (m)
Notions: Thread. VIEW C: One 1/4" (6 mm) button.						