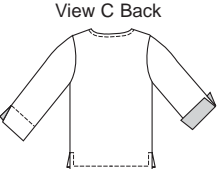




Misses' tops have round necklines finished with bias-cut binding. View A pullover top has flared sleeves, side hemline slits and decorative trim on front and sleeves. View B has open front with ribbon ties, and flared sleeves with ribbon trim. View C pullover top has contrast upper front and cuffs, three-quarter length sleeves, and side hemline slits.



**KWIK•SEW**  
price **3162**

**DESIGNED FOR LIGHTWEIGHT WOVEN FABRICS**  
Suggested Fabrics: Cotton types, georgette, challis, gauze, batiste, rayon blends

**MISSES' TOPS**  
Sizes: XS-S-M-L-XL

Size	XS	S	M	L	XL	
<b>Finished Length at Center Back</b>						
View A, B & C	22 1/2 (57)	23 1/2 (60)	24 1/2 (62)	25 1/2 (65)	26 1/2 (67)	" (cm)
<b>Material Required:</b> Fabric requirement allows for nap, one-way design or shading. Extra fabric may be needed to match design or for shrinkage.						
<b>Fabric 60" (152 cm) Wide</b>						
View A	1 3/8 (1.30)	1 1/2 (1.40)	1 1/2 (1.40)	1 5/8 (1.50)	1 5/8 (1.50)	yd (m)
View B	1 1/2 (1.40)	1 1/2 (1.40)	1 5/8 (1.50)	1 5/8 (1.50)	1 3/4 (1.60)	yd (m)
View C	1 1/8 (1.05)	1 1/4 (1.15)	1 1/4 (1.15)	1 1/4 (1.15)	1 3/8 (1.30)	yd (m)
Contrast	1/2 (0.50)	1/2 (0.50)	1/2 (0.50)	1/2 (0.50)	1/2 (0.50)	yd (m)
<b>Fabric 45" (115 cm) Wide</b>						
View A & B	1 3/4 (1.60)	1 7/8 (1.75)	2 (1.85)	2 (1.85)	2 1/8 (1.95)	yd (m)
View C	1 3/8 (1.30)	1 3/8 (1.30)	1 3/8 (1.30)	1 5/8 (1.50)	1 3/4 (1.60)	yd (m)
Contrast	1/2 (0.50)	1/2 (0.50)	1/2 (0.50)	1/2 (0.50)	1/2 (0.50)	yd (m)

**Notions:** Thread. VIEW A: 3/4" - 2" (2 cm - 5 cm) wide lace or trim - 2 1/4 yd (2.10 m) for size XS; 2 3/8 yd (2.20 m) for size S; 2 1/2 yd (2.30 m) for size M; 2 5/8 yd (2.40 m) for size L; 2 3/4 yd (2.55 m) for size XL. VIEW B: 3/8" - 3/4" (1 cm - 2 cm) wide ribbon trim - 2 yd (1.85 m) for sizes XS-S-M-L; 2 1/8 yd (2 m) for size XL. VIEW C: Scrap piece of fusible interfacing.