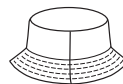


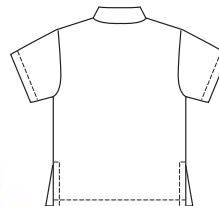
KWIK & EASY



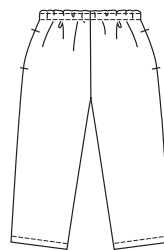
HAT Back



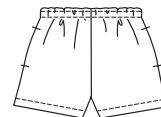
SHIRT Back



PANTS Back



SHORTS Back



Girls' shirt, shorts, cropped pants and hat. Shirt has extended shoulders, collar, pocket, short sleeves, and side hemline slits. Pull-on pants and shorts have pockets in outside leg seams and drawstring with elastic at back waist. Double layer hat has crown, side panel, and brim has topstitching.

KWIK•SEW®
price **3168**

DESIGNED FOR LIGHT TO MEDIUM WEIGHT WOVEN FABRICS
Suggested Fabrics: Cotton, cotton types, linen, challis, chambray, broadcloth

GIRLS' SHIRT, PANTS, SHORTS & HAT
Sizes: XS (4-5), S (6), M (7-8), L (10), XL (12-14)
HAT Sizes: S-M-L

Size	XS (4-5)	S (6)	M (7-8)	L (10)	XL (12-14)	
Height	42 (107)	46 (117)	50 (127)	55 (140)	60 (152)	" (cm)
Chest	23 1/2 (60)	25 (64)	26 1/2 (67)	28 1/2 (72)	31 (79)	" (cm)
Waist	22 (56)	23 (58)	24 (61)	25 (64)	27 (68)	" (cm)
Hip	24 (61)	25 1/2 (65)	27 1/2 (70)	30 (76)	32 (81)	" (cm)
Head Circumference	—	19 1/2 (49)	21 (53)	22 1/2 (57)	—	" (cm)
Finished Length of Shirt at Center Back	16 1/2 (42)	17 1/2 (45)	19 1/4 (49)	21 (53)	22 3/4 (58)	" (cm)
Finished Inside Leg Seam						
Shorts	1 3/4 (4.5)	2 (5)	2 1/4 (5.5)	2 1/2 (6)	2 3/4 (7)	" (cm)
Pants	11 (28)	12 1/2 (32)	14 (36)	16 (40)	18 (46)	" (cm)
Material Required: Fabric requirement allows for nap, one-way design or shading. Extra fabric may be needed to match design or for shrinkage.						
Fabric 60" (152 cm) Wide						
Shirt	7/8 (0.80)	7/8 (0.80)	1 (0.95)	1 (0.95)	1 (0.95)	yd (m)
Pants	7/8 (0.80)	7/8 (0.80)	1 (0.95)	1 1/8 (1.05)	1 1/4 (1.15)	yd (m)
Shorts	5/8 (0.60)	5/8 (0.60)	3/4 (0.70)	3/4 (0.70)	3/4 (0.70)	yd (m)
Hat	—	5/8 (0.60)	5/8 (0.60)	5/8 (0.60)	—	yd (m)
Fabric 45" (115 cm) Wide						
Shirt	1 1/8 (1.05)	1 1/8 (1.05)	1 1/4 (1.15)	1 3/8 (1.30)	1 1/2 (1.40)	yd (m)
Pants	1 1/8 (1.05)	1 1/8 (1.05)	1 1/4 (1.15)	1 3/8 (1.30)	1 1/2 (1.40)	yd (m)
Shorts	3/4 (0.70)	3/4 (0.70)	3/4 (0.70)	7/8 (0.80)	7/8 (0.80)	yd (m)
Hat	—	7/8 (0.80)	7/8 (0.80)	7/8 (0.80)	—	yd (m)
Fusible Interfacing 24" (60 cm) Wide						
Shirt	5/8 (0.60)	5/8 (0.60)	5/8 (0.60)	3/4 (0.70)	3/4 (0.70)	yd (m)
Hat	—	7/8 (0.80)	7/8 (0.80)	7/8 (0.80)	—	yd (m)

Notions: Thread. SHIRT: Four 5/8" (15 mm) buttons. PANTS & SHORTS: 3/8 yd (0.35 m) of 1/2" (12 mm) wide elastic, scrap piece of fusible interfacing.