

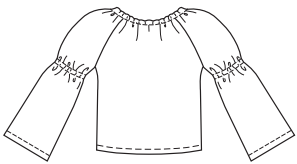


KWIK & EASY

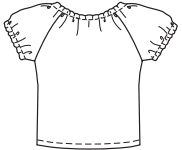


Girls' tops and skirt. Pullover tops have raglan sleeves and necklines gathered with elastic in casings. View A has wide full-length sleeves with elastic at upper arms. View B has short sleeves with elastic in casings. Pull-on skirt has elastic waist and is made from five different fabrics.

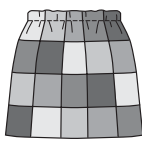
TOP VIEW A
Back



TOP VIEW B
Back



SKIRT
Front & Back



KWIK·SEW®
3169 price

GIRLS' TOPS & SKIRT
Sizes: XS (4-5), S (6), M (7-8),
L (10), XL (12-14)

DESIGNED FOR LIGHTWEIGHT WOVEN FABRICS
Suggested Fabrics: Cotton, cotton types, challis, rayon and blends
Tops also in gauze, lawn, batiste

Size	XS (4-5)	S (6)	M (7-8)	L (10)	XL (12-14)	
Height	42 (107)	46 (117)	50 (127)	55 (140)	60 (152)	" (cm)
Chest	23 1/2 (60)	25 (64)	26 1/2 (67)	28 1/2 (72)	31 (79)	" (cm)
Waist	22 (56)	23 (58)	24 (61)	25 (64)	27 (68)	" (cm)
Hip	24 (61)	25 1/2 (65)	27 1/2 (70)	30 (76)	32 (81)	" (cm)
Finished Length of Top from Natural Neckline						
View A & B	15 1/2 (39)	16 3/4 (42)	18 (45)	19 1/2 (49)	21 (53)	" (cm)
Finished Length of Skirt						
	10 1/4 (26)	11 1/4 (28)	12 3/8 (32)	14 3/4 (37)	16 1/4 (41)	" (cm)
Material Required: Fabric requirement allows for nap, one-way design or shading. Extra fabric may be needed to match design or for shrinkage.						
Fabric 60" (152 cm) Wide						
Top View A	7/8 (0.80)	1 (0.95)	1 (0.95)	1 1/8 (1.05)	1 1/8 (1.05)	yd (m)
Top View B	5/8 (0.60)	5/8 (0.60)	5/8 (0.60)	5/8 (0.60)	3/4 (0.70)	yd (m)
Fabric 45" (115 cm) Wide						
Top View A	1 1/8 (1.05)	1 1/4 (1.15)	1 3/8 (1.30)	1 1/2 (1.40)	1 1/2 (1.40)	yd (m)
Top View B	7/8 (0.80)	7/8 (0.80)	7/8 (0.80)	1 (0.95)	1 (0.95)	yd (m)
Fabric 60" (152 cm) or 45" (115 cm) Wide						
Skirt						
Each of Five Colors	1/4 (0.25)	1/4 (0.25)	1/4 (0.25)	1/4 (0.25)	1/4 (0.25)	yd (m)
Notions: Thread. TOP View A & B: 1 3/8 yd (1.30 m) of 1/4" (6 mm) wide elastic. SKIRT: 3/4 yd (0.70 m) of 3/4" (2 cm) wide elastic.						