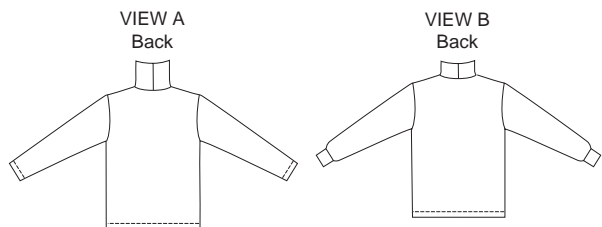


Men's pullover shirts. View A has turtle-neck and full-length hemmed sleeves. View B has mock turtleneck and full-length sleeves with cuffs. Collars and cuffs can be made from self-fabric or ribbing.



MEN'S



KWIK•SEW®
price **3186**

DESIGNED FOR STRETCH KNITS ONLY WITH 25% STRETCH
Suggested Fabrics: Interlock, textured knits, thermal knits, stretch velour

MEN'S SHIRTS
Sizes: S-M-L-XL-XXL

DUAL INSTRUCTION INCLUDED: SERGER (OVERLOCK) AND STANDARD SEWING MACHINES

Size	S	M	L	XL	XXL	
Finished Length at Center Back						
View A & B	27 1/2 (70)	28 1/4 (72)	29 1/4 (74)	30 (76)	30 3/4 (78)	" (cm)
Material Required: Fabric requirement allows for nap, one-way design or shading. Extra fabric may be needed to match design or for shrinkage.						
Fabric 60" (152 cm) Wide						
View A	1 3/4 (1.60)	1 3/4 (1.60)	1 3/4 (1.60)	1 7/8 (1.75)	2 (1.85)	yd (m)
View B	1 5/8 (1.50)	1 5/8 (1.50)	1 3/4 (1.60)	1 3/4 (1.60)	1 7/8 (1.75)	yd (m)
Ribbing 28" (70 cm) Wide (Optional)						
View A & B	12 (30)	12 (30)	12 (30)	12 (30)	12 (30)	" (cm)
Notions: Thread, scrap piece of fusible interfacing.						