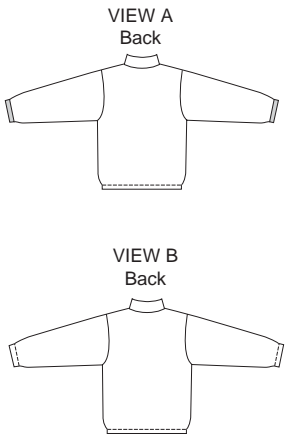




Men's jacket has stand-up collar, forward shoulder seams, forward side seams, front zipper, and elastic drawstring at bottom edge. View A has zipper pockets and sleeves finished with bindings from swimwear fabric. View B has pockets in side seams and elastic in casing at bottom of sleeves.



KWIK•SEW®
3187 price

MEN'S JACKETS DESIGNED FOR HEAVY STRETCH KNITS ONLY
 Suggested Fabrics: Polarfleece®, heavy fleece, blanket fleece
 Lining for pockets: Light to medium weight woven fabric

Size	S	M	L	XL	XXL	
Finished Length at Center Back						" (cm)
View A & B	28 (71)	28 (71)	28 (71)	30 1/2 (78)	30 1/2 (78)	
Material Required: Fabric requirement allows for nap, one-way design or shading. Extra fabric may be needed to match design or for shrinkage.						
Fabric 60" (152 cm) Wide						
View A or B	1 3/4 (1.60)	1 3/4 (1.60)	1 7/8 (1.75)	1 7/8 (1.75)	2 1/4 (2.10)	yd (m)
Lining View A	3/8 (0.35)	3/8 (0.35)	3/8 (0.35)	1/2 (0.50)	1/2 (0.50)	yd (m)
Lining View B	3/8 (0.35)	3/8 (0.35)	3/8 (0.35)	3/8 (0.35)	3/8 (0.35)	yd (m)
Fabric 45" (115 cm) Wide						
Lining View A	3/8 (0.35)	3/8 (0.35)	3/8 (0.35)	3/4 (0.70)	3/4 (0.70)	yd (m)
Lining View B	3/8 (0.35)	3/8 (0.35)	3/4 (0.70)	3/4 (0.70)	3/4 (0.70)	yd (m)
Swimwear Fabric for Bindings 30" (75 cm) Wide (minimum width)						
View A	1/8 (0.15)	1/8 (0.15)	1/8 (0.15)	1/8 (0.15)	1/8 (0.15)	yd (m)
Fusible Interfacing 24" (60 cm) Wide						
View A or B	1/2 (0.50)	1/2 (0.50)	1/2 (0.50)	1/2 (0.50)	1/2 (0.50)	yd (m)
Notions: Thread, one separating zipper – 28" (70 cm) for sizes S-M-L; 30" (75 cm) for sizes XL-XXL, elastic cording – 1 1/2 yd (1.40 m) for sizes S-M-L; 1 3/4 yd (1.60 m) for sizes XL-XXL, two cord locks.						
VIEW A: Two 7" (18 cm) zippers. VIEW B: 3/4 yd (0.70 m) of 3/4" (2 cm) wide elastic.						