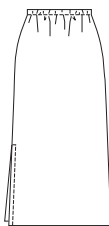
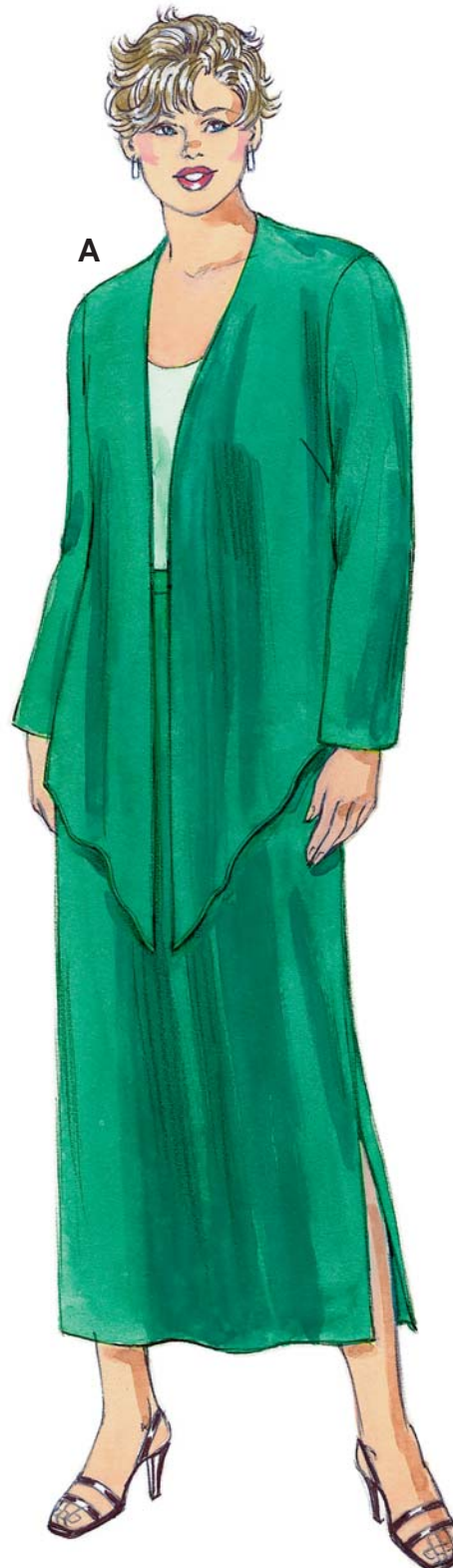




VIEW A
Back



VIEW B
Back



Women's jackets & pull-on skirts. Jackets have bust darts, no closures, full length sleeves and neckline and front edges finished with facings. View A has angled hemline and slit at center back. View B has jewel neckline and side hemline slits. Skirts have elastic in casing at waist with flat fronts. View A has side hemline slits.

PLUS SIZE

PLUS SIZES

KWIK•SEW®
3191 price

WOMEN'S JACKETS & SKIRTS
Sizes: 1X-2X-3X-4X

DESIGNED FOR LIGHT TO MEDIUM WEIGHT WOVEN AND FIRM KNIT FABRICS
Suggested Fabrics: Crepe, challis, silk, silk types, linen, faille, double knit

Size	1X	2X	3X	4X	
Finished Length of Skirt					
View A	34 (86)	34 (86)	34 (86)	34 (86)	" (cm)
View B	26 (66)	26 (66)	26 (66)	26 (66)	" (cm)
Finished Length of Jacket at Center Back					
View A	35 (89)	36 (92)	37 1/2 (95)	38 1/2 (98)	" (cm)
View B	26 1/2 (67)	27 1/2 (70)	28 1/2 (72)	29 1/2 (75)	" (cm)
Material Required: Fabric requirement allows for nap, one-way design or shading. Extra fabric may be needed to match design or for shrinkage.					
Fabric 60" (152 cm) Wide					
View A	3 3/8 (3.10)	3 5/8 (3.35)	4 3/8 (4.00)	4 3/8 (4.00)	yd (m)
View B	3 1/8 (2.85)	3 1/2 (3.20)	3 5/8 (3.35)	3 5/8 (3.35)	yd (m)
Fabric 45" (115 cm) Wide					
View A	4 7/8 (4.50)	5 (4.60)	5 1/8 (4.70)	5 3/4 (5.30)	yd (m)
View B	4 1/8 (3.80)	4 1/4 (3.90)	4 3/8 (4.00)	5 (4.60)	yd (m)
Fusible Interfacing 24" (60 cm) Wide					
View A	1 1/4 (1.15)	1 1/4 (1.15)	1 1/4 (1.15)	1 1/4 (1.15)	yd (m)
View B	1 (0.95)	1 (0.95)	1 (0.95)	1 (0.95)	yd (m)

Notions: Thread. SKIRT: 1" (2.5 cm) wide elastic - 1 1/8 yd (1.05 m) for sizes 1X & 2X, 1 3/8 yd (1.30 m) for sizes 3X-4X.