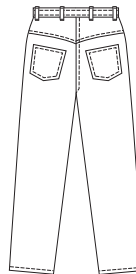
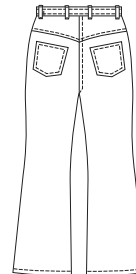




VIEW A Back



VIEW B Back



Misses' jeans have fly zipper, waistband with belt carriers, back yoke, back patch pockets, front pockets and a coin pocket. View A has straight legs and View B has flared legs.

PANTS

KWIK•SEW®
price **3193**

DESIGNED FOR MEDIUM WEIGHT WOVEN FABRICS

Suggested Fabrics: Denim, corduroy, twill, gabardine, chino, velveteen

MISSES' JEANS

Sizes: XS-S-M-L-XL

Size	XS	S	M	L	XL	
Finished Inside Leg Seam						
View A & B	30 (76)	30 (76)	30 (76)	30 (76)	30 (76)	" (cm)
Finished Width at Bottom of Leg						
View A	14 1/2 (37)	15 1/4 (39)	16 1/4 (41)	17 1/4 (44)	18 (46)	" (cm)
View B	19 1/4 (49)	20 1/4 (52)	21 1/4 (54)	22 (56)	23 (58)	" (cm)
Material Required: Fabric requirement allows for nap, one-way design or shading. Extra fabric may be needed to match design or for shrinkage.						
Fabric 60" (152 cm) Wide						
View A or B	1 1/2 (1.40)	1 1/2 (1.40)	1 5/8 (1.50)	2 1/4 (2.10)	2 3/8 (2.20)	yd (m)
Fabric 45" (115 cm) Wide						
View A or B	2 3/8 (2.20)	2 1/2 (2.30)	2 1/2 (2.30)	2 1/2 (2.30)	2 5/8 (2.40)	yd (m)
Lining 45" (115 cm) or 60" (152 cm) Wide						
View A or B Pockets	3/8 (0.35)	3/8 (0.35)	3/8 (0.35)	3/8 (0.35)	1/2 (0.50)	yd (m)

Notions: Thread, one button or snap, 9" (22 cm) zipper. NOTE: Purchase suggested length of zipper or longer, zipper will be trimmed.