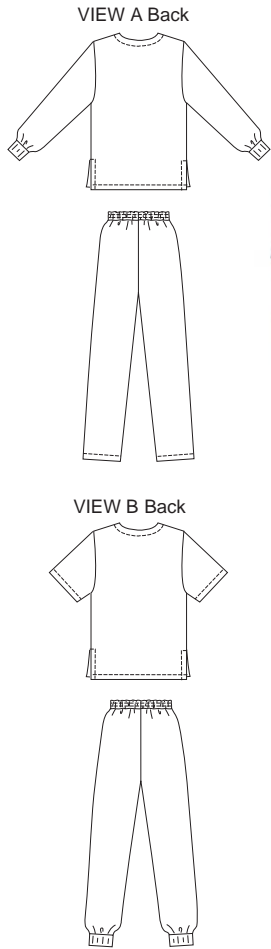


Women's scrubs. View A shirt jacket has snap or button closure, three patch pockets, side hemline slits, and long sleeves with ribbing cuffs. View B pullover shirt has short sleeves, three patch pockets, V-neckline and side hemline slits. Pull-on pants have front pockets and waistband with stitched elastic. Pants View A are hemmed and View B have ribbing leg cuffs.



PLUS SIZE

**KWIK-SEW®**  
**3201** price

**WOMEN'S SCRUBS**  
 Sizes: 1X-2X-3X-4X

DESIGNED FOR WOVEN FABRICS  
 Suggested Fabrics: Cotton, cotton types, broadcloth, twill, calico

Size	1X	2X	3X	4X	
<b>Finished Length of Shirt at Center Back</b>					
View A & B	30 (76)	30 1/2 (77)	31 1/4 (79)	32 (81)	" (cm)
<b>Finished Outside Leg Seam</b>					
View A & B	40 1/2 (103)	41 (104)	41 1/2 (106)	42 (107)	" (cm)
<b>Material Required:</b> Extra fabric may be needed to match design or for shrinkage.					
<b>Fabric 60" (152 cm) Wide</b>					
View A Shirt	2 1/4 (2.10)	2 1/4 (2.10)	2 5/8 (2.40)	2 5/8 (2.40)	yd (m)
Pants	2 1/4 (2.10)	2 1/2 (2.30)	2 5/8 (2.40)	2 3/4 (2.55)	yd (m)
View B Shirt	2 1/4 (2.10)	2 1/4 (2.10)	2 3/8 (2.20)	2 3/8 (2.20)	yd (m)
Pants	2 1/4 (2.10)	2 3/8 (2.20)	2 1/2 (2.30)	2 3/4 (2.55)	yd (m)
<b>Fabric 45" (115 cm) Wide</b>					
View A Shirt	2 5/8 (2.40)	2 7/8 (2.65)	3 1/8 (2.85)	3 1/4 (3.00)	yd (m)
Pants	2 3/4 (2.55)	2 3/4 (2.55)	2 7/8 (2.65)	3 1/8 (2.85)	yd (m)
View B Shirt	2 3/8 (2.20)	2 1/2 (2.30)	2 5/8 (2.40)	2 3/4 (2.55)	yd (m)
Pants	2 5/8 (2.40)	2 5/8 (2.40)	2 7/8 (2.65)	3 1/8 (2.85)	yd (m)
<b>Ribbing 28" (70 cm) Wide</b>					
View A Shirt	6 (15)	6 (15)	6 (15)	6 (15)	" (cm)
View B Pants	6 (15)	6 (15)	6 (15)	6 (15)	" (cm)
<b>Fusible Interfacing 24" (60 cm) Wide</b>					
View A Shirt	7/8 (0.80)	1 (0.95)	1 (0.95)	1 (0.95)	yd (m)
View B Shirt	1/4 (0.25)	1/4 (0.25)	1/4 (0.25)	1/4 (0.25)	yd (m)
<b>Notions:</b> Thread. SHIRT VIEW A: Six 5/8" (15 mm) buttons or snaps. PANTS: Scrap piece of fusible interfacing, 1 1/4 yd (1.15 m) of 1 1/2" (4 cm) wide elastic.					