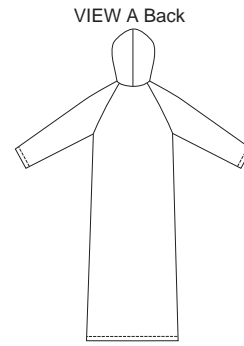




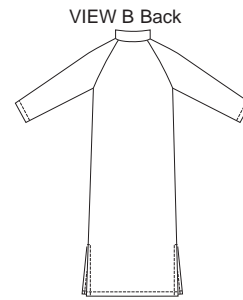
A



B



VIEW A Back



VIEW B Back

Misses' robes have raglan sleeves. View A has hood, kangaroo pockets and separating zipper at center front. View B has center front seam with zipper opening, V-neck with neckband, pockets in side seams, and side hemline slits. Neckband has optional decorative double-needle stitching to resemble ribbing.

**KWIK•SEW®**  
**3209** price

**KWIK & EASY**

**MISSES' ROBES** DESIGNED FOR HEAVY STRETCH KNITS  
 Sizes: XS-S-M-L-XL Suggested Fabrics: Polarfleece®, sweatshirt fleece, robe velour

Size	XS	S	M	L	XL	
<b>Finished Length at Center Back from Neckline</b>						
View A & B	52 1/2 (133)	53 (135)	53 1/2 (136)	54 (137)	54 1/2 (139)	" (cm)
<b>Material Required:</b> Fabric requirement allows for nap, one-way design or shading. Extra fabric may be needed to match design or for shrinkage.						
<b>Fabric 60" (152 cm) Wide</b>						
View A	2 1/2 (2.30)	2 1/2 (2.30)	2 5/8 (2.40)	2 7/8 (2.65)	3 5/8 (3.35)	yd (m)
View B	2 1/2 (2.30)	2 1/2 (2.30)	2 1/2 (2.30)	2 7/8 (2.65)	3 5/8 (3.35)	yd (m)

**Notions:** Thread. VIEW A: One 36" (91 cm) separating zipper. VIEW B: One 24" (61 cm) zipper.