

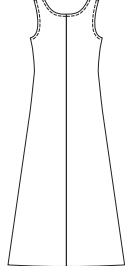
Jacket VIEW A Back



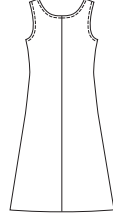
Jacket VIEW B Back



Dress VIEW A Back



Dress VIEW B Back



Misses' dresses and jackets. Sleeveless pullover dresses have center back seam. Neckline and armholes are finished with narrow hems. Jackets tie in front and outer edges are finished with narrow hems. View A jacket has three-quarter length sleeves. View B jacket has full-length sleeves.



DRESSES

**KWIK & EASY**

**KWIK•SEW®**  
price **3214**

**DESIGNED FOR STRETCH KNITS ONLY WITH 25% STRETCH**  
Suggested Fabrics: Jersey, interlock, stretch velvet, matte jersey, lightweight double knit, textured knits, stretch faille

**MISSES' DRESSES & JACKETS**  
Sizes: XS-S-M-L-XL

Size	XS	S	M	L	XL	
<b>Finished Length of Dress from Waist</b>						
View A	34" (86 cm) All Sizes					
View B	26" (66 cm) All Sizes					
<b>Finished Length of Jacket at Center Back</b>						
View A & B	19 (49)	19 1/2 (50)	20 (51)	21 (53)	21 1/2 (55)	" (cm)
<b>Material Required:</b> Fabric requirement allows for nap, one-way design or shading. Extra fabric may be needed to match design or for shrinkage.						
<b>Fabric 60" (152 cm) Wide</b>						
<b>Dress &amp; Jacket:</b>						
View A	2 3/4 (2.55)	2 3/4 (2.55)	2 3/4 (2.55)	2 7/8 (2.65)	3 1/8 (2.85)	yd (m)
View B	2 1/2 (2.30)	2 1/2 (2.30)	2 5/8 (2.40)	2 5/8 (2.40)	2 3/4 (2.55)	yd (m)
<b>Dress:</b>						
View A	1 5/8 (1.50)	1 7/8 (1.75)	2 (1.85)	2 1/4 (2.10)	2 3/4 (2.55)	yd (m)
View B	1 1/4 (1.15)	1 3/8 (1.30)	1 3/8 (1.30)	1 5/8 (1.50)	1 7/8 (1.75)	yd (m)

**Notions:** Thread, scrap piece of non-fusible interfacing for shoulder stabilizer.