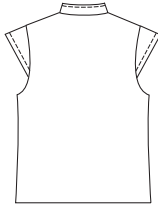
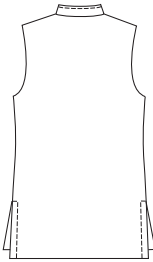




Misses' pullover tunic and top have Mandarin collar, bust darts, and slit at center front neckline with button and loop closure. View A has side hemline slits and armholes finished with facings. View B armholes are finished with facings and have sleeve caps.

VIEW A Back

VIEW B Back



KWIK•SEW®
3222 price

MISSES' TUNIC & TOP DESIGNED FOR LIGHT TO MEDIUM WEIGHT WOVEN FABRICS
 Sizes: XS-S-M-L-XL Suggested Fabrics: Linen, linen types, crepe, silk, silk types, georgette, challis, cotton, cotton blends

Size	XS	S	M	L	XL	
Finished Length at Center Back						
View A	27 3/4 (70)	28 3/4 (73)	29 1/2 (75)	30 1/2 (77)	31 1/2 (80)	" (cm)
View B	21 1/4 (54)	21 3/4 (55)	22 1/4 (56)	22 3/4 (58)	23 1/4 (59)	" (cm)
Material Required: Fabric requirement allows for nap, one-way design or shading. Extra fabric may be needed to match design or for shrinkage.						
Fabric 60" (152 cm) Wide						
View A	1 1/4 (1.15)	1 3/8 (1.30)	1 3/8 (1.30)	1 3/8 (1.30)	1 1/2 (1.40)	yd (m)
View B	1 1/8 (1.05)	1 1/8 (1.05)	1 1/8 (1.05)	1 1/8 (1.05)	1 1/4 (1.15)	yd (m)
Fabric 45" (115 cm) Wide						
View A	1 3/4 (1.60)	1 7/8 (1.75)	1 7/8 (1.75)	2 (1.85)	2 (1.85)	yd (m)
View B	1 3/8 (1.30)	1 1/2 (1.40)	1 1/2 (1.40)	1 1/2 (1.40)	1 5/8 (1.50)	yd (m)
Fusible Interfacing 24" (60 cm) Wide						
View A or B	5/8 (0.60)	5/8 (0.60)	3/4 (0.70)	3/4 (0.70)	3/4 (0.70)	yd (m)
Notions: Thread. VIEW A or B: One 3/8" (10 mm) button.						