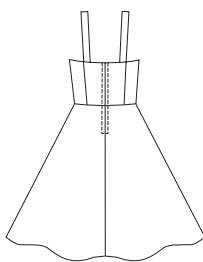
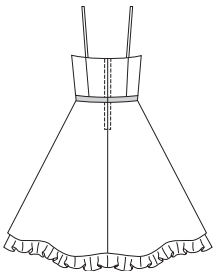




Misses' dresses have fitted lined bodice with princess seams, flared skirt, and center back zipper. Trim at top edge seam is optional. View A has spaghetti shoulder straps, attached slip with tulle extending below bottom edge of dress, and ribbon trim at waist. View B has wider shoulder straps and no slip.

VIEW A Back

VIEW B Back



KWIK•SEW®
3228 price

MISSES' DRESSES
 Sizes: XS-S-M-L-XL

DESIGNED FOR LIGHT TO MEDIUM WEIGHT WOVEN FABRICS

Suggested Fabrics: Cotton, cotton types, linen, linen types, taffeta, silk, silk types, shantung, satin

Size	XS	S	M	L	XL	
Finished Length of Dress from Waist						" (cm)
View A or B	24 (60)	24 (60)	24 (60)	24 (60)	24 (60)	
Material Required: Fabric requirement allows for nap, one-way design or shading. Extra fabric may be needed to match design or for shrinkage.						
Fabric 60" (152 cm) Wide						
View A or B	1 1/2 (1.40)	1 1/2 (1.40)	1 1/2 (1.40)	1 1/2 (1.40)	1 5/8 (1.50)	yd (m)
View A Lining	1 3/8 (1.30)	1 3/8 (1.30)	1 3/8 (1.30)	1 3/8 (1.30)	1 3/8 (1.30)	yd (m)
Tulle	1 3/4 (1.60)	1 3/4 (1.60)	1 3/4 (1.60)	2 3/8 (2.20)	2 3/8 (2.20)	yd (m)
View B Lining	3/8 (0.35)	3/8 (0.35)	3/8 (0.35)	3/8 (0.35)	3/8 (0.35)	yd (m)
Fabric 45" (115 cm) Wide						
View A or B	1 3/4 (1.60)	1 3/4 (1.60)	1 7/8 (1.75)	2 1/8 (1.95)	2 1/4 (2.10)	yd (m)
View A Lining	1 5/8 (1.50)	1 5/8 (1.50)	1 3/4 (1.60)	1 3/4 (1.60)	1 3/4 (1.60)	yd (m)
View B Lining	5/8 (0.60)	5/8 (0.60)	5/8 (0.60)	5/8 (0.60)	5/8 (0.60)	yd (m)
Fusible Interfacing 24" (60 cm) Wide						
View A or B	3/8 (0.35)	3/8 (0.35)	3/8 (0.35)	3/8 (0.35)	3/8 (0.35)	yd (m)

Notions: Thread, one 12" (30 cm) zipper, hook & eye set, optional trim for top edge seam – 1 yd (0.95 m) for sizes XS-S; 1 3/8 yd (1.30 m) for sizes M-L-XL. **VIEW A:** 5/8" - 1" (1.5 cm - 2 cm) wide ribbon for waist – 1 1/8 yd (1.05 m) for sizes XS-S; 1 3/8 yd (1.30 m) for sizes M-L-XL.