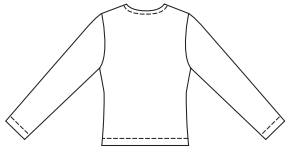


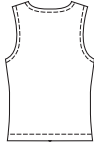


Misses' skort, tank top and cardigan. Fitted skort has deep front side pockets, center back zipper, and narrow waistband. Skirt is slightly A-lined and shorts are from lining. Close-fitting cardigan has front zipper, neckline and front edges are finished with facings from contrast fabric. Close-fitting tank top has neckline and armholes finished with narrow hems.

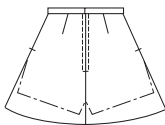
CARDIGAN Back



TOP Back

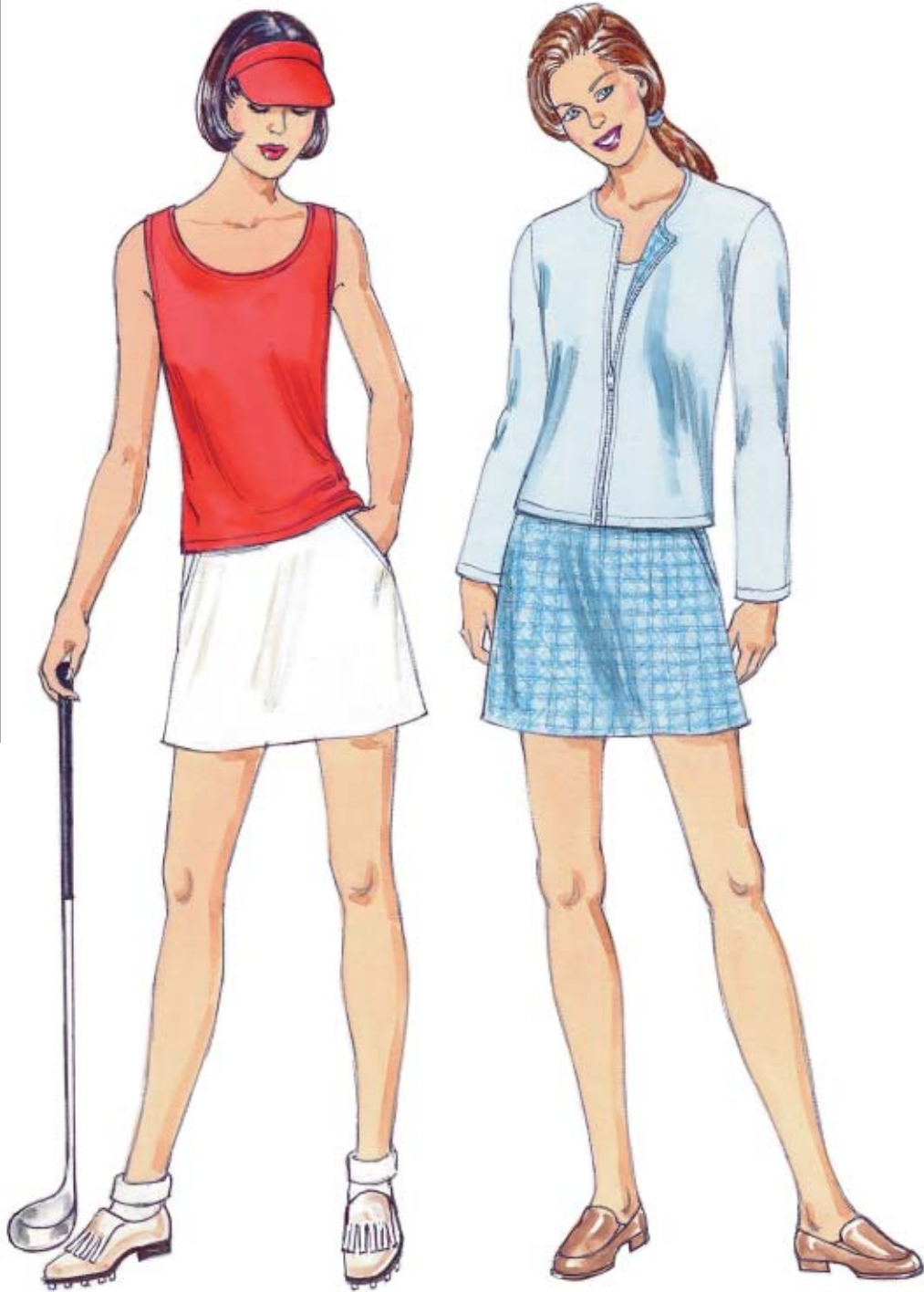


SKORT Back



SKORT

KWIK•SEW®
3232 price



SKORT DESIGNED FOR WOVEN FABRIC
Suggested Fabrics: Cotton, cotton types, twill, denim, chino, linen, gabardine
LINING FOR SHORTS: Lightweight cotton-type woven fabric
CARDIGAN & TOP DESIGNED FOR STRETCH KNITS ONLY WITH 25% STRETCH
Suggested Fabrics: Interlock, stretch velour, textured knits, stretch terry

Size	XS	S	M	L	XL	
Finished Lengths at Center Back:						
Skort	14 1/4 (36)	15 (38)	15 3/4 (40)	16 1/2 (42)	17 1/4 (44)	" (cm)
Cardigan	20 (51)	20 (51)	20 (51)	22 1/2 (57)	22 1/2 (57)	" (cm)
Top	19 1/2 (50)	19 1/2 (50)	19 1/2 (50)	22 (56)	22 (56)	" (cm)
Material Required: Fabric requirement allows for nap, one-way design or shading. Extra fabric may be needed to match design or for shrinkage.						
Fabric 60" (152 cm) Wide						
SKORT Skirt Fabric	7/8 (0.80)	1 (0.95)	1 (0.95)	1 (0.95)	1 1/8 (1.05)	yd (m)
Shorts Lining	1/2 (0.50)	1/2 (0.50)	5/8 (0.60)	3/4 (0.70)	7/8 (0.80)	yd (m)
CARDIGAN & TOP						
Fabric	2 (1.85)	2 (1.85)	2 (1.85)	2 1/4 (2.10)	2 1/4 (2.10)	yd (m)
Contrast Fabric	3/4 (0.70)	3/4 (0.70)	3/4 (0.70)	3/4 (0.70)	3/4 (0.70)	yd (m)
Fabric 45" (115 cm) Wide						
SKORT Skirt Fabric	1 (0.95)	1 (0.95)	1 1/8 (1.05)	1 1/4 (1.15)	1 1/4 (1.15)	yd (m)
Shorts Lining	7/8 (0.80)	1 (0.95)	1 (0.95)	1 (0.95)	1 1/8 (1.05)	yd (m)
CARDIGAN						
Contrast Fabric	3/4 (0.70)	3/4 (0.70)	3/4 (0.70)	3/4 (0.70)	3/4 (0.70)	yd (m)

Notions: Thread. SKORT: One 7" (18 cm) zipper, one hook & eye set, scrap piece of fusible interfacing. CARDIGAN: Scrap piece of fusible interfacing, one separating zipper - 18" (45 cm) for sizes XS-S-M; 20" (50 cm) for sizes L-XL.