

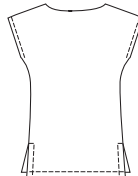
KWIK Start™ LEARN-TO-SEW

ESPECIALLY DESIGNED FOR FIRST SEWING PROJECT!

Misses' tops and skirt. Tops have boat neckline finished with facing, and hemmed cap sleeves. View A top has side hemline slits and is shown with purchased belt. View B top has hemmed bottom edge. Flared eight-panel pull-on skirt has elastic in casing at waist. Tops and skirt are very easy to sew and have special easy-to-follow sewing instructions.



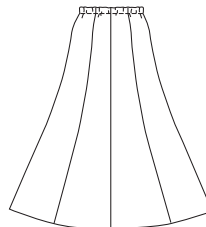
TOP VIEW A Back



TOP VIEW B Back



SKIRT



KWIK•SEW®
price **3233**

DESIGNED FOR LIGHT TO MEDIUM WEIGHT WOVEN FABRICS
Suggested Fabrics: Cotton, cotton blends, rayon and blends, linen, challis

MISSSES' TOPS & SKIRT
Sizes: XS-S-M-L-XL

| Size | XS | S | M | L | XL | |
|---|--------------|--------------|--------------|--------------|--------------|--------|
| Finished Length of Top at Center Back | | | | | | |
| View A | 22 (56) | 23 (58) | 24 (61) | 25 (63) | 26 (65) | " (cm) |
| View B | 19 (48) | 19 1/2 (50) | 20 1/2 (51) | 21 (53) | 21 1/2 (55) | " (cm) |
| Finished Length of Skirt | 34 (86) | 34 (86) | 34 (86) | 34 (86) | 34 (86) | " (cm) |
| Material Required: Fabric requirement allows for nap, one-way design or shading. Extra fabric may be needed to match design or for shrinkage. | | | | | | |
| Fabric 60" (152 cm) Wide | | | | | | |
| Top View A | 1 (0.95) | 1 (0.95) | 1 1/8 (1.05) | 1 1/8 (1.05) | 1 3/4 (1.60) | yd (m) |
| Skirt | 2 1/4 (2.10) | 2 1/4 (2.10) | 2 1/4 (2.10) | 2 3/8 (2.20) | 2 1/2 (2.30) | yd (m) |
| Top & Skirt View B | 3 1/4 (3.00) | 3 1/4 (3.00) | 3 1/4 (3.00) | 3 1/4 (3.00) | 3 1/4 (3.00) | yd (m) |
| Fabric 45" (115 cm) Wide | | | | | | |
| Top View A | 1 5/8 (1.50) | 1 5/8 (1.50) | 1 3/4 (1.60) | 2 (1.85) | 2 (1.85) | yd (m) |
| Skirt | 4 1/4 (3.90) | 4 1/4 (3.90) | 4 1/4 (3.90) | 4 1/4 (3.90) | 4 1/4 (3.90) | yd (m) |
| Top & Skirt View B | 4 3/8 (4.00) | 4 1/2 (4.15) | 5 (4.60) | 5 5/8 (5.15) | 5 5/8 (5.15) | yd (m) |
| Fusible Interfacing 24" (60 cm) Wide | | | | | | |
| Top View A & B | 3/8 (0.35) | 3/8 (0.35) | 3/8 (0.35) | 3/8 (0.35) | 3/8 (0.35) | yd (m) |
| Notions: Thread. SKIRT: 1 yd (0.95 m) of 1" (2.5 cm) wide elastic. | | | | | | |

SKIRTS & TOPS

KWIK Start™ LEARN-TO-SEW