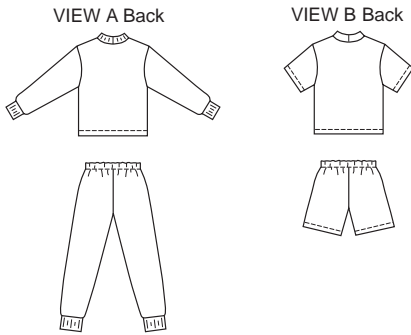




Girls' and Boys' pajamas are close-fitting. Pullover tops have ribbing or self-fabric neckbands. View A has long sleeves with ribbing or self-fabric cuffs. View B has hemmed short sleeves. Pants and shorts, without side seams, have elastic in casing at waist. View A pants have ribbing or self-fabric leg cuffs, View B shorts are hemmed.



**KWIK·SEW®**  
**3234** price

**GIRLS' & BOYS' PAJAMAS**

Sizes: XS(4-5)–S(6)–M(7-8)–L(10)–XL(12-14)

DESIGNED FOR STRETCH KNITS ONLY WITH 25% STRETCH

Suggested Fabrics: Interlock, textured knits, thermal knits

DUAL INSTRUCTION INCLUDED: SERGER (OVERLOCK) AND STANDARD SEWING MACHINES

Size	XS (4-5)	S (6)	M (7-8)	L (10)	XL (12-14)	
<b>Finished Length of Top at Center Back</b>						
View A & B	16 1/2 (42)	17 3/4 (45)	19 (48)	20 3/4 (52)	22 1/2 (57)	" (cm)
<b>Finished Inside Leg Seam</b>						
View A	17 (43)	19 1/4 (49)	21 1/4 (54)	23 3/4 (60)	26 3/4 (68)	" (cm)
View B	2 1/2 (6)	2 3/4 (6.5)	3 (7)	3 1/4 (8)	3 1/2 (9)	" (cm)
<b>Material Required:</b> Fabric requirement allows for nap, one-way design or shading. Extra fabric may be needed to match design or for shrinkage.						
<b>Fabric 60" (152 cm) Wide</b>						
View A	1 1/4 (1.15)	1 3/8 (1.30)	1 1/2 (1.40)	1 5/8 (1.50)	1 3/4 (1.60)	yd (m)
View B	1 (0.95)	1 1/8 (1.05)	1 1/8 (1.05)	1 1/4 (1.15)	1 3/8 (1.30)	yd (m)
<b>Ribbing 28" (70 cm) Wide (Optional)</b>						
View A	9 (23)	9 (23)	9 (23)	9 (23)	11 (28)	" (cm)
View B	3 (8)	3 (8)	3 (8)	3 (8)	3 (8)	" (cm)

**Notions:** Thread, 5/8 yd (0.60 m) of 3/4" (2 cm) wide elastic, scrap piece of fusible interfacing.