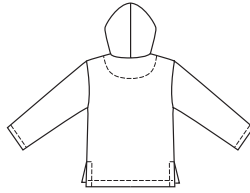


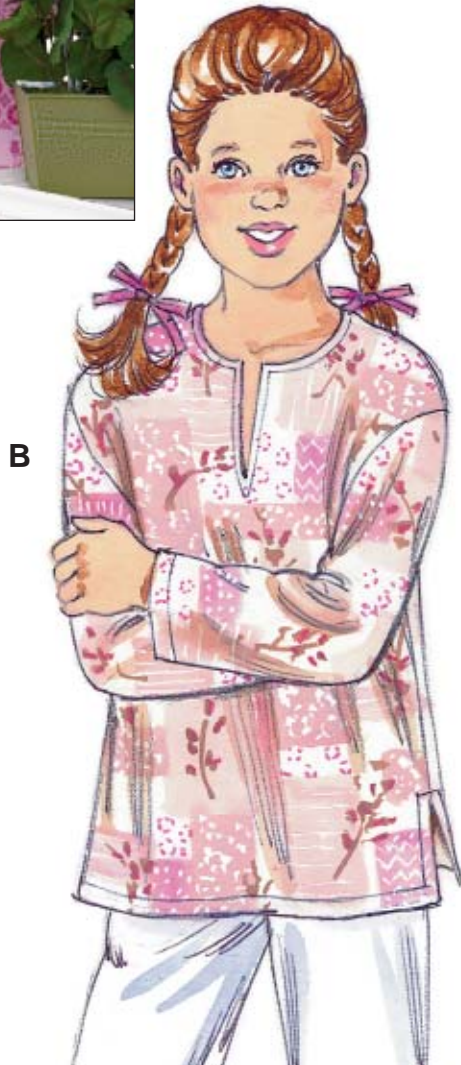
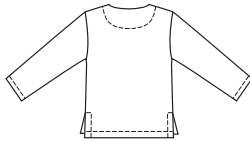


Girls' and Boys' pullover tops have extended shoulders, side hemline slits and full-length sleeves. View A has slit at center front, hood, and patch pocket. View B has slit at center front, and neckline finished with facings.

VIEW A Back



VIEW B Back



B



A

KWIK & EASY

GIRLS' & BOYS'

KWIK•SEW®
price **3235**

DESIGNED FOR LIGHT TO MEDIUM WEIGHT WOVEN FABRIC
Suggested Fabrics: Cotton, cotton types, linen, rayon and blends, shirtings, gauze, challis, denim

GIRLS' & BOYS' TOPS
Sizes: XS(4-5)–S(6)–M(7-8)–L(10)–XL(12-14)

Size	XS (4-5)	S (6)	M (7-8)	L (10)	XL (12-14)	
Finished Length at Center Back	17 1/4 (43.5)	18 1/2 (47)	20 (51)	21 1/2 (55)	23 1/2 (59.5)	" (cm)
Material Required: Fabric requirement allows for nap, one-way design or shading. Extra fabric may be needed to match design or for shrinkage.						
Fabric 60" (152 cm) Wide						
View A	1 1/8 (1.05)	1 1/4 (1.15)	1 1/2 (1.40)	1 5/8 (1.50)	1 7/8 (1.75)	yd (m)
View B	1 1/8 (1.05)	1 1/8 (1.05)	1 1/4 (1.15)	1 3/8 (1.30)	1 1/2 (1.40)	yd (m)
Fabric 45" (115 cm) Wide						
View A	1 1/2 (1.40)	1 1/2 (1.40)	1 5/8 (1.50)	1 7/8 (1.75)	2 (1.85)	yd (m)
View B	1 1/8 (1.05)	1 1/8 (1.05)	1 1/4 (1.15)	1 3/8 (1.30)	1 5/8 (1.50)	yd (m)
Fusible Interfacing 24" (60 cm) Wide						
View A or B	3/8 (0.30)	3/8 (0.30)	3/8 (0.30)	3/8 (0.30)	3/8 (0.30)	yd (m)

Notions: Thread.