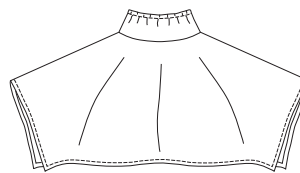
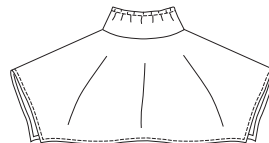




SKIRT VIEW A Back



SKIRT VIEW B Back



TOP Back



SKIRTS & TOPS

Misses' skirts and top. Hankerchief pull-on skirt has yoke, elastic in casing at waist, and uneven hemline with four points. Pullover top is very close fitting, has scoop neckline and cap sleeves. Neckline and armholes are finished with self-fabric bindings.

## KWIK & EASY

KWIK•SEW®  
price **3242**

SKIRTS DESIGNED FOR SOFT LIGHTWEIGHT WOVEN FABRIC  
Suggested Fabrics: Challis, rayon, silk, silk types, handkerchief linen  
TOP DESIGNED FOR STRETCH KNITS ONLY WITH 25% STRETCH  
Suggested Fabrics: Interlock, stretch terry, textured knits, matte jersey

MISSES' SKIRTS & TOP  
Sizes: XS-S-M-L-XL

Size	XS	S	M	L	XL	
<b>Finished Length of Top at Center Back from Natural Neckline</b>	21 1/4 (54)	22 (56)	22 3/4 (58)	23 1/2 (60)	24 (61)	" (cm)
<b>Finished Length of Skirt at Center Front, Center Back, and Sides</b>						
View A	28" (71 cm) All Sizes					
View B	24" (60 cm) All Sizes					
<b>Material Required:</b> Fabric requirement allows for nap, one-way design or shading. Extra fabric may be needed to match design or for shrinkage.						
<b>Fabric 60" (152 cm) Wide</b>						
Top	7/8 (0.80)	7/8 (0.80)	7/8 (0.80)	7/8 (0.80)	7/8 (0.80)	yd (m)
Skirt View A	1 7/8 (1.75)	1 7/8 (1.75)	2 (1.85)	2 (1.85)	2 (1.85)	yd (m)
View B	1 5/8 (1.50)	1 5/8 (1.50)	1 3/4 (1.60)	1 3/4 (1.60)	1 3/4 (1.60)	yd (m)
<b>Fabric 45" (115 cm) Wide Cut on Crosswise Grain</b>						
Skirt View A	3 1/8 (2.85)	3 1/4 (3.00)	3 1/4 (3.00)	3 1/4 (3.00)	3 3/8 (3.10)	yd (m)
View B	2 5/8 (2.40)	2 3/4 (2.55)	2 3/4 (2.55)	2 7/8 (2.65)	2 7/8 (2.65)	yd (m)

**Notions:** Thread. SKIRT: 7/8 yd (0.80 m) of 3/8" (1 cm) wide elastic. TOP: Scrap piece of fusible interfacing.