



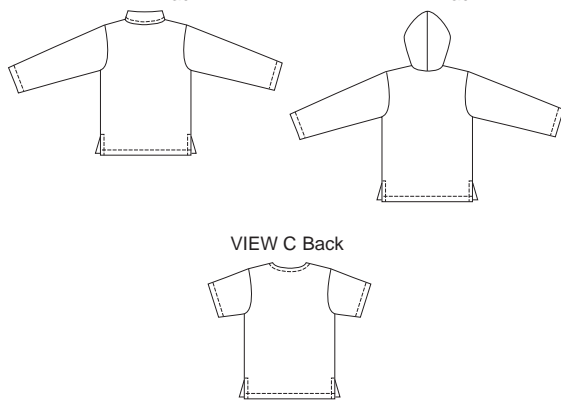
Men's pullover shirts have front slit, side hemline slits, and necklines finished with facings. View A has collar and long sleeves. View B has hood, kangaroo patch pocket and long sleeves. View C has short sleeves and breast pocket.



VIEW A Back

VIEW B Back

VIEW C Back



KWIK•SEW®
3250 price

KWIK & EASY

MEN'S SHIRTS

DESIGNED FOR LIGHT TO MEDIUM WEIGHT WOVEN FABRIC

Sizes: S-M-L-XL-XXL

Suggested Fabrics: Cotton, cotton types, linen, flannel, broadcloth, chambray, rayon & blends

Size	S	M	L	XL	XXL	
Finished Length at Center Back						" (cm)
View A, B & C	28 (72)	29 (74)	30 (76)	31 (78)	32 (81)	
Material Required: Fabric requirement allows for nap, one-way design or shading. Extra fabric may be needed to match design or for shrinkage.						
Fabric 60" (152 cm) Wide						
View A	2 1/8 (1.95)	2 1/8 (1.95)	2 1/8 (1.95)	2 1/4 (2.10)	2 1/4 (2.10)	yd (m)
View B	2 1/4 (2.10)	2 3/8 (2.20)	2 3/8 (2.20)	2 1/2 (2.30)	2 1/2 (2.30)	yd (m)
View C	1 7/8 (1.75)	1 7/8 (1.75)	2 (1.85)	2 (1.85)	2 (1.85)	yd (m)
Fabric 45" (115 cm) Wide						
View A	2 1/2 (2.30)	2 5/8 (2.40)	3 3/8 (3.10)	3 1/2 (3.20)	3 5/8 (3.35)	yd (m)
View B	3 (2.75)	3 1/8 (2.85)	3 3/4 (3.45)	3 7/8 (3.55)	4 (3.70)	yd (m)
View C	2 1/8 (1.95)	2 1/4 (2.10)	2 5/8 (2.40)	2 3/4 (2.55)	2 3/4 (2.55)	yd (m)
Fusible Interfacing 24" (60 cm) Wide						
View A	5/8 (0.60)	3/4 (0.70)	3/4 (0.70)	3/4 (0.70)	3/4 (0.70)	yd (m)
View B & C	5/8 (0.60)	5/8 (0.60)	5/8 (0.60)	5/8 (0.60)	5/8 (0.60)	yd (m)
Notions: Thread.						