

# KWIK Start® LEARN-TO-SEW

ESPECIALLY DESIGNED FOR FIRST SEWING PROJECT!

KNIT TOPS

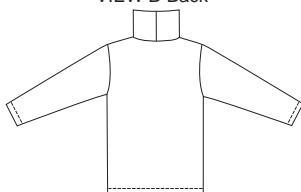
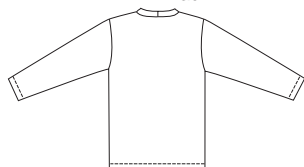
KWIK Start® LEARN-TO-SEW



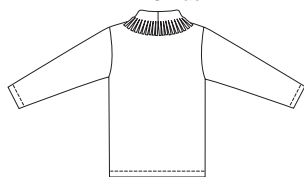
Misses' pullover tops. View A has neckband. View B has stand-up collar that can be worn folded or scrunched. View C has single layer fold-over collar with cut fringe at outside edge. Tops are very easy to make and have special easy-to-follow sewing instructions.

VIEW A Back

VIEW B Back



VIEW C Back



KWIK•SEW®

3262 price

MISSES' TOPS  
Sizes: XS-S-M-L-XL

DESIGNED FOR HEAVYWEIGHT STRETCH KNITS  
Suggested Fabrics: Polarfleece®, heavy fleece, berber fleece

Size	XS	S	M	L	XL	
<b>Finished Length at Center Back from Neckline</b>						
View A, B & C	23 1/2 (60)	24 1/2 (62)	25 1/2 (64)	26 (67)	27 (69)	" (cm)
<b>Material Required:</b> Fabric requirement allows for nap, one-way design or shading. Extra fabric may be needed to match design or for shrinkage.						
<b>Fabric 60" (152 cm) Wide</b>						
View A	1 1/2 (1.40)	1 5/8 (1.50)	1 5/8 (1.50)	1 5/8 (1.50)	1 3/4 (1.60)	yd (m)
View B	1 3/4 (1.60)	1 3/4 (1.60)	1 7/8 (1.75)	1 7/8 (1.75)	2 (1.85)	yd (m)
View C	1 3/4 (1.60)	1 3/4 (1.60)	1 3/4 (1.60)	1 3/4 (1.60)	1 7/8 (1.75)	yd (m)

**Notions:** Thread, scrap piece of fusible interfacing.