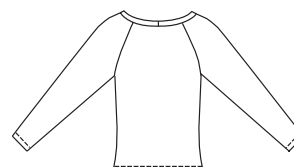


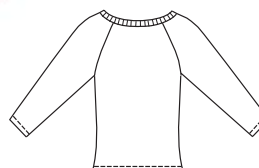


Misses' close-fitting pullover tops have raglan sleeves and wide necklines. View A has long hemmed sleeves, self-fabric neckband and bow trim. View B has three-quarter length hemmed sleeves and neckband from ribbing. View C has three-quarter length sleeves, wide neckband and sleeve cuffs from ribbing.

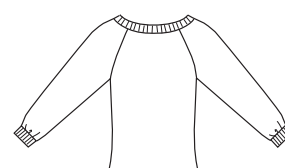
VIEW A Back



VIEW B Back



VIEW C Back



**KWIK-SEW**  
price **3263**

DESIGNED FOR STRETCH KNITS ONLY WITH 25% STRETCH ACROSS THE GRAIN

Suggested Fabrics: Interlock, textured knits, velour, panne, stretch velvet, stretch lace

**MISSES' TOPS**

Sizes: XS-S-M-L-XL

DUAL INSTRUCTION INCLUDED: SERGER (OVERLOCK) AND STANDARD SEWING MACHINES

Size	XS	S	M	L	XL	
<b>Finished Length at Center Back from Natural Neckline</b>						
View A, B & C	22 1/2 (57)	23 (58)	23 1/2 (59)	24 (61)	24 (61)	" (cm)
<b>Material Required:</b> Fabric requirement allows for nap, one-way design or shading. Extra fabric may be needed to match design or for shrinkage.						
<b>Fabric 60" (152 cm) Wide</b>						
View A	1 3/8 (1.30)	1 3/8 (1.30)	1 3/8 (1.30)	1 3/8 (1.30)	1 1/2 (1.40)	yd (m)
View B	1 1/4 (1.15)	1 1/4 (1.15)	1 1/4 (1.15)	1 3/8 (1.30)	1 3/8 (1.30)	yd (m)
View C	1 1/4 (1.15)	1 1/4 (1.15)	1 1/4 (1.15)	1 1/4 (1.15)	1 1/4 (1.15)	yd (m)
<b>Ribbing 28" (70 cm) Wide</b>						
View B	3 (7)	3 (7)	3 (7)	3 (7)	3 (7)	" (cm)
View C	9 (23)	9 (23)	9 (23)	9 (23)	9 (23)	" (cm)

Notions: Thread.