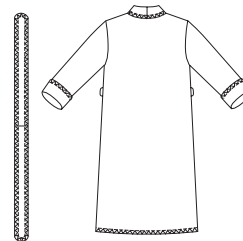


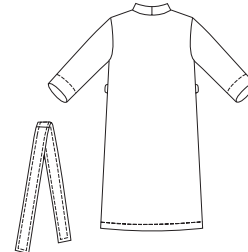


Misses' wrap robes. View A has patch pockets, turned-up cuffs, single layer collar and belt. All outside edges are finished with serger (overlock) machine. Wrong side of fabric will show on collar, belt, cuffs and upper part of pockets. View B has front and neckline band and pockets in side seams.

VIEW A Back



VIEW B Back



KWIK•SEW®
price **3264**

DESIGNED FOR HEAVYWEIGHT STRETCH KNITS ONLY
Suggested Fabrics: Polarfleece®, heavy fleece, blanket fleece

MISSIES' ROBES
Sizes: XS-S-M-L-XL

DUAL INSTRUCTION INCLUDED: SERGER (OVERLOCK) AND STANDARD SEWING MACHINES

| Size | XS | S | M | L | XL | |
|--|--------------|--------------|--------------|--------------|--------------|--------|
| Finished Length at Center Back from Neckline | | | | | | |
| View A | 53 1/2 (136) | 54 (137) | 54 1/2 (138) | 55 (140) | 56 (142) | " (cm) |
| View B | 52 1/2 (133) | 53 (134) | 53 1/2 (136) | 54 (138) | 55 (140) | " (cm) |
| Material Required: Fabric requirement allows for nap, one-way design or shading. Extra fabric may be needed to match design or for shrinkage. | | | | | | |
| Fabric 60" (152 cm) Wide | | | | | | |
| View A | 3 3/8 (3.10) | 3 3/8 (3.10) | 3 3/8 (3.10) | 3 3/8 (3.10) | 3 1/2 (3.20) | yd (m) |
| View B | 3 1/4 (3.00) | 3 1/4 (3.00) | 3 3/8 (3.10) | 3 3/8 (3.10) | 3 3/8 (3.10) | yd (m) |

Notions: Thread. VIEW A: Piece of non-fusible interfacing 4" x 22" (10 cm x 60 cm). VIEW B: Scrap piece of fusible interfacing.