

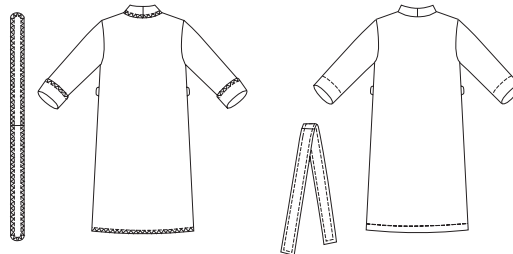


MEN'S

Men's wrap robes. View A has patch pockets, fold-up cuffs, single layer collar and belt. All outside edges are finished with serger (overlock) machine. Wrong side of fabric will show on collar, belt, cuffs and upper part of pockets. View B has front and neckline band, and pockets in side seams.

VIEW A Back

VIEW B Back



KWIK-SEW
price **3266**

DESIGNED FOR HEAVYWEIGHT STRETCH KNITS ONLY
Suggested Fabrics: Polarfleece®, heavy fleece, blanket fleece

MEN'S ROBES
Sizes: S-M-L-XL-XXL

DUAL INSTRUCTION INCLUDED: SERGER (OVERLOCK) AND STANDARD SEWING MACHINES

Size	S	M	L	XL	XXL	
Finished Length at Center Back						
View A	53 1/2 (135)	54 (137)	54 1/2 (138)	55 (140)	55 1/2 (141)	" (cm)
View B	52 1/2 (133)	53 (134)	53 1/2 (136)	54 (137)	54 1/2 (139)	" (cm)
Material Required: Fabric requirement allows for nap, one-way design or shading. Extra fabric may be needed to match design or for shrinkage.						
Fabric 60" (152 cm) Wide						
View A	3 1/4 (3.00)	3 1/4 (3.00)	3 1/2 (3.20)	3 1/2 (3.20)	3 1/2 (3.20)	yd (m)
View B	3 3/8 (3.10)	3 3/8 (3.10)	3 3/8 (3.10)	3 1/2 (3.20)	3 1/2 (3.20)	yd (m)
Notions: Thread. VIEW A: Piece of non-fusible interfacing 4" x 28" (10 cm x 70 cm). VIEW B: Scrap piece of fusible interfacing.						