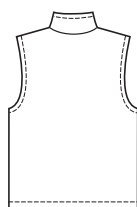
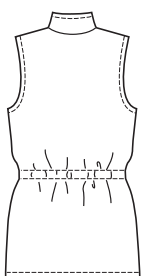




Women's vests have shaped stand-up collar, zipper front, forward shoulder seams, and front side panels with pockets in seams. View A has drawstring in casing at waist. View B has inside collar, front facings and side panels from contrast fabric.

VIEW A Back

VIEW B Back



PLUS SIZES

KWIK•SEW®
3269 price 

WOMEN'S VESTS
 Sizes: 1X-2X-3X-4X

DESIGNED FOR MEDIUM TO HEAVYWEIGHT STRETCH KNITS ONLY
 Suggested Fabrics: Polarfleece®, sweatshirt fleece, berber fleece

Size	1X	2X	3X	4X	
Finished Length at Center Back					
View A	30 1/2 (77)	31 (79)	32 (81)	32 1/2 (83)	" (cm)
View B	26 (66)	26 1/2 (68)	27 (69)	27 1/2 (70)	" (cm)
Material Required: Fabric requirement allows for nap, one-way design or shading. Extra fabric may be needed to match design or for shrinkage.					
Fabric 60" (152 cm) Wide					
View A	1 5/8 (1.50)	1 3/4 (1.60)	1 7/8 (1.75)	1 7/8 (1.75)	yd (m)
View B Fabric	1 1/8 (1.05)	1 1/8 (1.05)	1 1/4 (1.15)	1 1/4 (1.15)	yd (m)
Contrast	7/8 (0.80)	7/8 (0.80)	7/8 (0.80)	1 (0.95)	yd (m)
Fusible Interfacing 24" (60 cm) Wide					
View A	1 1/8 (1.05)	1 1/8 (1.05)	1 1/8 (1.05)	1 1/8 (1.05)	yd (m)
View B	1 (0.95)	1 (0.95)	1 (0.95)	1 (0.95)	yd (m)
Notions: Thread. VIEW A: One separating zipper – 32" (82 cm) for size 1X, 34" (87 cm) for sizes 2X-3X-4X; cording – 1 3/4 yd (1.60 m) for size 1X, 1 7/8 yd (1.75 m) for size 2X, 2 yd (1.85 m) for size 3X, 2 1/8 yd (1.95 m) for size 4X; cord locks (optional).					
VIEW B: One separating zipper – 28" (70 cm) for sizes 1X-2X-3X, 30" (75 cm) for size 4X.					
NOTE: Purchase suggested length of zipper or longer, zipper will be trimmed.					