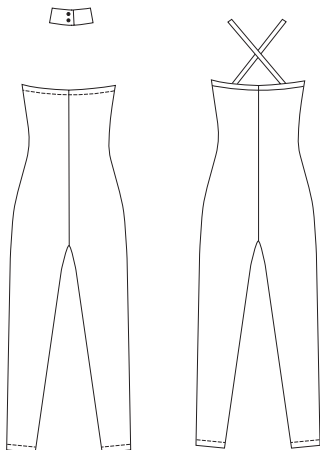




Misses' close-fitting unitards have ankle-length fitted legs, shelf bra lining, center back seam, and no seams at center front or sides. View A is halter-style, has collar with back snap closure, and armhole and back edges are finished with elastic. View B has shoulder straps with elastic, and armhole and neckline edges are finished with elastic.

VIEW A Back

VIEW B Back



ACTIVE & SWIMWEAR

KWIK·SEW®
3273 price

MISSES' UNITARDS DESIGNED FOR TWO-WAY STRETCH FABRIC WITH 75% STRETCH
 Sizes: XS-S-M-L-XL Suggested Fabrics: Cotton Lycra®, nylon Lycra®, swimwear fabric, stretch velvet

Size	XS	S	M	L	XL	
Inside Leg to Floor	31 1/2" (80 cm) All Sizes					
Material Required: Fabric requirement allows for nap, one-way design or shading. Extra fabric may be needed to match design or for shrinkage.						
Fabric 60" (152 cm) Wide with Greatest degree of Stretch on Lengthwise Grain						
View A	1 1/4 (1.15)	1 1/4 (1.15)	1 3/8 (1.30)	1 1/2 (1.40)	1 5/8 (1.50)	yd (m)
View B	1 1/4 (1.15)	1 1/4 (1.15)	1 3/8 (1.30)	1 3/4 (1.60)	1 7/8 (1.75)	yd (m)
Fabric 60" (152 cm) Wide with Greatest degree of Stretch on Crosswise Grain						
View A	1 5/8 (1.50)	1 5/8 (1.50)	1 5/8 (1.50)	1 5/8 (1.50)	1 3/4 (1.60)	yd (m)
View B	1 1/2 (1.40)	1 1/2 (1.40)	1 1/2 (1.40)	1 5/8 (1.50)	1 5/8 (1.50)	yd (m)
Swimwear Lining 45" (115 cm) or 60" (152 cm) Wide with Greatest degree of Stretch on Lengthwise Grain						
View A or B	7/8 (0.80)	7/8 (0.80)	1 (0.95)	1 (0.95)	1 1/8 (1.05)	yd (m)

Notions: Thread, 1 yd (0.95 m) of 3/4" (2 cm) wide elastic.

VIEW A: Two 3/8" (1 cm) snaps, 3/8" (1 cm) wide elastic – 1 yd (0.95 m) for sizes XS-S; 1 1/4 yd (1.15 m) for sizes M-L-XL.

VIEW B: 3/8" (1 cm) wide elastic – 2 yd (1.85 m) for sizes XS-S-M, 2 1/4 yd (2.10 m) for sizes L-XL.