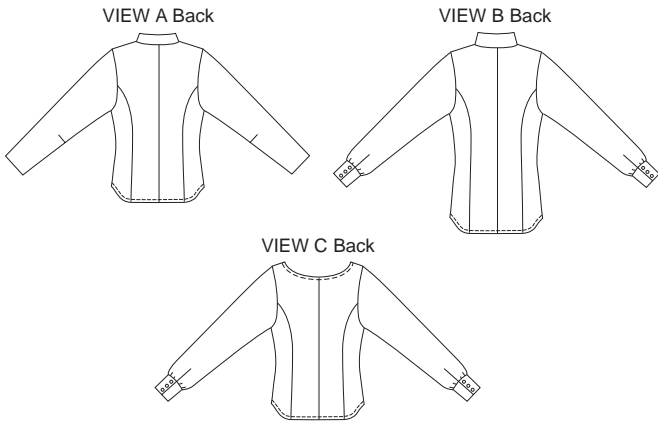




Misses' fitted blouse has princess seams and curved hemline. View A has full-length straight sleeves, Mandarin collar, and hook and eye tape closure. View B has full-length sleeves with cuffs, stand-up collar and button closure. View C has full-length sleeves with cuffs, and scoop neckline finished with self-fabric bias-cut binding.



KWIK-SEW®
3289 price

MISSES' BLOUSES
 Sizes: XS-S-M-L-XL

DESIGNED FOR LIGHT TO MEDIUM WEIGHT WOVEN FABRICS
 Suggested Fabrics: Cotton, cotton types, linen, denim, jacquard, silk, silk types

| Size | XS | S | M | L | XL | |
|--|--------------|--------------|--------------|--------------|--------------|--------|
| Finished Length at Center Back from Natural Neckline | | | | | | |
| View A & C | 20 1/2 (52) | 21 1/4 (54) | 22 1/4 (56) | 23 (58) | 24 (60) | " (cm) |
| View B | 22 1/2 (57) | 23 1/4 (59) | 24 1/4 (61) | 25 (63) | 26 (66) | " (cm) |
| Material Required: Fabric requirement allows for nap, one-way design or shading. Extra fabric may be needed to match design or for shrinkage. | | | | | | |
| Fabric 60" (152 cm) Wide | | | | | | |
| View A | 1 1/4 (1.15) | 1 1/4 (1.15) | 1 3/8 (1.30) | 1 1/2 (1.40) | 1 1/2 (1.40) | yd (m) |
| View B | 1 3/8 (1.30) | 1 3/8 (1.30) | 1 1/2 (1.40) | 1 1/2 (1.40) | 1 1/2 (1.40) | yd (m) |
| View C | 1 1/2 (1.40) | 1 1/2 (1.40) | 1 5/8 (1.50) | 1 5/8 (1.50) | 1 5/8 (1.50) | yd (m) |
| Fabric 45" (115 cm) Wide | | | | | | |
| View A | 1 7/8 (1.75) | 1 7/8 (1.75) | 1 7/8 (1.75) | 2 (1.85) | 2 (1.85) | yd (m) |
| View B | 1 3/4 (1.60) | 1 7/8 (1.75) | 1 7/8 (1.75) | 2 (1.85) | 2 (1.85) | yd (m) |
| View C | 1 3/4 (1.60) | 1 7/8 (1.75) | 2 (1.85) | 2 1/8 (1.95) | 2 1/8 (1.95) | yd (m) |
| Fusible Interfacing 24" (60 cm) Wide | | | | | | |
| View A & C | 5/8 (0.60) | 5/8 (0.60) | 5/8 (0.60) | 5/8 (0.60) | 5/8 (0.60) | yd (m) |
| View B | 3/4 (0.70) | 3/4 (0.70) | 3/4 (0.70) | 3/4 (0.70) | 3/4 (0.70) | yd (m) |

Notions: Thread. VIEW A: 5/8 yd (0.60 m) hook & eye tape. VIEW B: Fifteen 5/8" (15 mm) Buttons. VIEW C: Eleven 5/8" (15 mm) buttons.