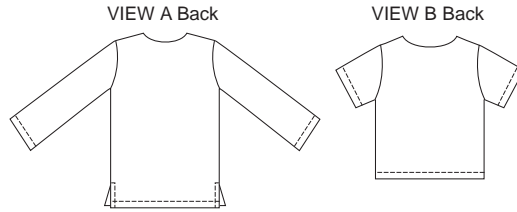


KWIK Start® LEARN-TO-SEW

ESPECIALLY DESIGNED FOR FIRST SEWING PROJECT!

Misses' pullover tops. View A has front slit, neckline finished with facing, full-length sleeves and side hemline slits. View B has V-neckline finished with facing, and short sleeves. Tops are very easy to sew and have special easy-to-follow sewing instructions.



KWIK•SEW®
price **3302**

DESIGNED FOR LIGHTWEIGHT WOVEN FABRICS

Suggested Fabrics: Cotton types, linen, rayon, challis, crepe, silk types

MISSES' TOPS

Sizes: XS-S-M-L-XL

Size	XS	S	M	L	XL	
Finished Length at Center Back						
View A	26 1/2 (67)	27 1/4 (69)	28 (71)	28 3/4 (73)	29 1/2 (75)	" (cm)
View B	20 (51)	20 3/4 (53)	21 1/2 (55)	22 1/4 (57)	23 (59)	" (cm)
Material Required: Fabric requirement allows for nap, one-way design or shading. Extra fabric may be needed to match design or for shrinkage.						
Fabric 60" (152 cm) Wide						
View A	1 5/8 (1.50)	1 3/4 (1.60)	1 3/4 (1.60)	1 7/8 (1.75)	1 7/8 (1.75)	yd (m)
View B	1 1/8 (1.05)	1 1/4 (1.15)	1 1/4 (1.15)	1 3/8 (1.30)	1 3/8 (1.30)	yd (m)
Fabric 45" (115 cm) Wide						
View A	2 1/2 (2.30)	2 1/2 (2.30)	2 5/8 (2.40)	2 5/8 (2.40)	2 3/4 (2.55)	yd (m)
View B	1 7/8 (1.75)	2 (1.85)	2 (1.85)	2 (1.85)	2 1/8 (1.95)	yd (m)
Fusible Interfacing 24" (60 cm) Wide						
View A & B	3/8 (0.35)	3/8 (0.35)	3/8 (0.35)	3/8 (0.35)	3/8 (0.35)	yd (m)
Notions: Thread.						

WOVEN TOPS

KWIK Start® LEARN-TO-SEW