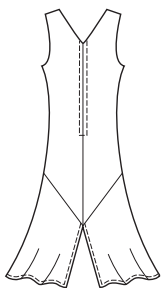
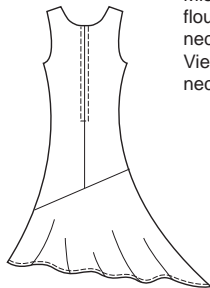


VIEW A Back



VIEW B Back



Misses' dresses. Semi-fitted dresses have flounces, bust darts, center back zipper, and necklines and armholes finished with facings. View A has V-neckline. View B has scoop neckline and asymmetrical flounce.

A



B



DRESSES

KWIK•SEW®

price **3306**

**DESIGNED FOR SOFT LIGHTWEIGHT WOVEN FABRICS**

Suggested Fabrics: Challis, cotton, silk types, charmeuse, gauze, georgette, handkerchief linen

**MISSSES' DRESSES**  
Sizes: XS-S-M-L-XL

| Size   | XS           | S            | M            | L            | XL           |        |
|--|--------------|--------------|--------------|--------------|--------------|--------|
| <b>Finished Length at Side from Natural Waist</b>  |              |              |              |              |              |        |
| View A   | 30 (76)      | 30 1/2 (77)  | 30 3/4 (78)  | 31 (79)      | 31 (79)      | " (cm) |
| View B Right Side  | 37 1/2 (95)  | 38 (96)      | 38 (96)      | 38 1/2 (97)  | 38 1/2 (97)  | " (cm) |
| Left Side  | 26 (66)      | 27 (68)      | 28 (71)      | 29 (73)      | 30 (76)      | " (cm) |
| <b>Material Required:</b> Fabric requirement allows for nap, one-way design or shading. Extra fabric may be needed to match design or for shrinkage. |              |              |              |              |              |        |
| <b>Fabric 60" (152 cm) Wide</b>  |              |              |              |              |              |        |
| View A   | 2 5/8 (2.40) | 2 3/4 (2.55) | 2 3/4 (2.55) | 2 3/4 (2.55) | 2 7/8 (2.65) | yd (m) |
| View B   | 3 1/4 (3.00) | 3 3/8 (3.10) | 3 1/2 (3.20) | 3 5/8 (3.35) | 3 3/4 (3.45) | yd (m) |
| <b>Fabric 45" (115 cm) Wide</b>  |              |              |              |              |              |        |
| View A*  | 2 7/8 (2.65) | 3 3/8 (3.10) | 3 1/2 (3.20) | 3 3/4 (3.45) | 4 (3.70)     | yd (m) |
| View B   | 3 7/8 (3.55) | 4 1/8 (3.80) | 4 1/4 (3.90) | 4 1/2 (4.15) | 4 3/4 (4.35) | yd (m) |

**Notions:** Thread, optional fusible interfacing, hook and eye set. VIEW A: One 14" (35 cm) zipper. VIEW B: One 20" (50 cm) zipper.

\* Flounces are cut on crosswise grain.