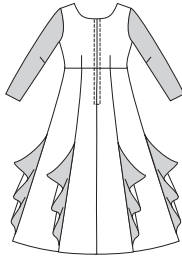


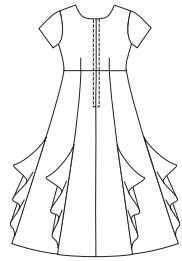


Misses' fitted dresses have empire waist, flared princess-line skirt, center back zipper, and neckline finished with facing. View A has flounces in panel seams, scoop neckline, and full-length sleeves; sleeves and flounces are from contrast fabric. Views B and C have deep V-necklines and short sleeves. View B has flounces in panel seams.

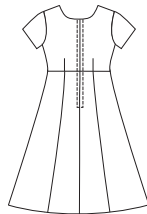
VIEW A Back



VIEW B Back



VIEW C Back



KWIK•SEW®

3307 ^{price}

MISSES' DRESSES

Sizes: XS-S-M-L-XL

DESIGNED FOR LIGHTWEIGHT WOVEN FABRICS

Suggested Fabrics: Challis, crepe, silk, silk-like fabrics, rayon, rayon blends

Contrast Fabric View A also in sheer fabrics such as chiffon, georgette, or lace

Size	XS	S	M	L	XL	
Finished Length from Natural Waist						
View A & B	38 1/2" (98 cm) – All Sizes					
View C	26" (66 cm) – All Sizes					
Material Required: Fabric requirement allows for nap, one-way design or shading. Extra fabric may be needed to match design or for shrinkage.						
Fabric 60" (152 cm) Wide						
View A Fabric	3 (2.75)	3 (2.75)	3 (2.75)	3 (2.75)	3 (2.75)	yd (m)
Contrast	1 3/8 (1.30)	1 3/8 (1.30)	1 1/2 (1.40)	1 1/2 (1.40)	1 1/2 (1.40)	yd (m)
View B	3 7/8 (3.55)	3 7/8 (3.55)	4 (3.70)	4 (3.70)	4 (3.70)	yd (m)
View C	2 1/4 (2.10)	2 1/4 (2.10)	2 1/4 (2.10)	2 3/8 (2.20)	2 3/8 (2.20)	yd (m)
Fabric 45" (115 cm) Wide						
View A Fabric	4 1/8 (3.80)	4 1/8 (3.80)	4 1/4 (3.90)	4 1/4 (3.90)	4 1/4 (3.90)	yd (m)
Contrast	1 3/4 (1.60)	1 3/4 (1.60)	1 7/8 (1.75)	1 7/8 (1.75)	2 (1.85)	yd (m)
View B	5 1/4 (4.80)	5 3/8 (4.95)	5 3/8 (4.95)	5 1/2 (5.05)	5 1/2 (5.05)	yd (m)
View C	2 7/8 (2.65)	2 7/8 (2.65)	3 (2.75)	3 (2.75)	3 (2.75)	yd (m)
Fusible Interfacing 24" (60 cm) Wide						
View A	3/8 (0.35)	3/8 (0.35)	3/8 (0.35)	3/8 (0.35)	3/8 (0.35)	yd (m)
View B or C	1/2 (0.50)	1/2 (0.50)	5/8 (0.60)	5/8 (0.60)	5/8 (0.60)	yd (m)

Notions: Thread, 20" (50 cm) zipper, hook & eye set.