

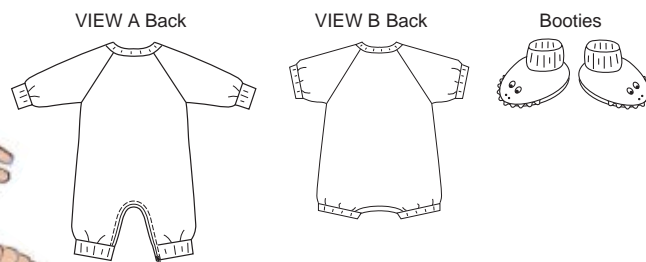


A



B

Baby jumpsuits and booties. Jumpsuits have raglan sleeves, front snap closure, and neckbands, sleeve cuffs and leg cuffs from ribbing. View A has full-length sleeves, zipper at inside leg and optional appliqué. View B has short sleeves, snap tape at inside leg, and pockets with rick rack and optional appliqué. Booties have ribbing cuffs and appliqué.



KWIK·SEW®
price **3310**

DESIGNED FOR STRETCH KNITS ONLY

Suggested Fabrics: Sweatshirt fleece, interlock, velour, French terry, jersey, golf knit, fleece

BABY JUMPSUITS & BOOTIES
Sizes: S-M-L-XL

Size	S	M	L	XL	
Material Required: Fabric requirement allows for nap, one-way design or shading. Extra fabric may be needed to match design or for shrinkage.					
Fabric 60" (152 cm) Wide					
View A	5/8 (0.60)	3/4 (0.70)	3/4 (0.70)	7/8 (0.80)	yd (m)
View B	1/2 (0.50)	5/8 (0.60)	5/8 (0.60)	5/8 (0.60)	yd (m)
Fabric 22" (55 cm) Wide (minimum width)					
Booties	1/4 (0.25)	1/4 (0.25)	1/4 (0.25)	1/4 (0.25)	yd (m)
Ribbing 28" (70 cm) Wide					
View A or B	7 (18)	7 (18)	7 (18)	7 (18)	" (cm)
Booties	4 (10)	4 (10)	4 (10)	4 (10)	" (cm)
Fusible Interfacing 24" (60 cm) Wide					
View A or B	1/8 (0.15)	1/8 (0.15)	1/8 (0.15)	1/8 (0.15)	yd (m)

Notions: Thread, four 3/8" (1 cm) snaps. **VIEW A:** One zipper – 11" (28 cm) for size S, 13" (33 cm) for size M, 16" (41 cm) for size L, 18" (46 cm) for size XL. **NOTE:** Purchase suggested length of zipper or longer, zipper can be trimmed. **VIEW B:** 1/4 yd (0.25 m) of snap tape, 5/8 yd (0.60 m) of 1/2" (12 mm) wide rick rack. **BOOTIES:** 1/2 yd (0.50 m) of 1/2" (12 mm) wide rick rack.

OPTIONAL APPLIQUÉ: Scrap pieces of fabric, paper-backed fusible web, tear-away material. View A: 3/8 yd (0.35 m) of 1/2" (12 mm) wide rick rack.