



KWIK & EASY™

MATERNITY

Misses' maternity pants and shorts. Instructions included on how to convert existing jeans into maternity with a panel from ribbing. Pull-on pants in three lengths have front and back panels from ribbing with elastic. View A are pants, View B are cropped, and View C are shorts.

Convert your favorite jeans!



jeans panel



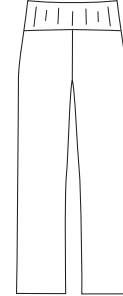
B



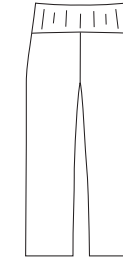
VIEW A, B & C Front



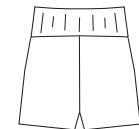
VIEW A Back



VIEW B Back



VIEW C Back



KWIK•SEW®
3324 price

**MISSES' MATERNITY PANTS,
SHORTS & JEANS PANEL**
Sizes: XS-S-M-L-XL

DESIGNED FOR WOVEN FABRICS
Suggested Fabrics: Chino, twill, denim, corduroy, linen, cotton types
PANELS DESIGNED FOR RIBBING

Standard Body Measurements BEFORE PREGNANCY:

Size	XS	S	M	L	XL	" (cm)
Hip	32 1/4-34 (82-86)	35 1/2-37 (90-94)	38 1/2-40 (98-102)	41 1/2-43 1/2 (106-110)	45-47 (115-120)	
Finished Inside Leg Seam						
View A	30" (76 cm) – All Sizes					
View B	24 1/2" (62 cm) – All Sizes					
View C	5" (12 cm) – All Sizes					

Material Required: Fabric requirement allows for nap, one-way design or shading. Extra fabric may be needed to match design or for shrinkage.

Fabric 60" (152 cm) Wide

	XS	S	M	L	XL	yd (m)
View A	1 1/4 (1.15)	1 1/4 (1.15)	2 1/8 (1.95)	2 1/8 (1.95)	2 1/8 (1.95)	yd (m)
View B	1 1/8 (1.05)	1 1/8 (1.05)	1 3/4 (1.60)	1 3/4 (1.60)	1 7/8 (1.75)	yd (m)
View C	1/2 (0.50)	1/2 (0.50)	3/4 (0.70)	3/4 (0.70)	7/8 (0.80)	yd (m)

Fabric 45" (115 cm) Wide

	XS	S	M	L	XL	yd (m)
View A	2 1/4 (2.10)	2 1/4 (2.10)	2 1/4 (2.10)	2 3/8 (2.20)	2 3/8 (2.20)	yd (m)
View B	1 7/8 (1.75)	2 (1.85)	2 (1.85)	2 (1.85)	2 (1.85)	yd (m)
View C	7/8 (0.80)	7/8 (0.80)	7/8 (0.80)	1 (0.95)	1 (0.95)	yd (m)

Ribbing 28" (70 cm) Wide

	XS	S	M	L	XL	" (cm)
View A, B & C	25 (64)	26 (65)	28 (71)	29 (74)	31 (79)	" (cm)
Jeans Panel	Approximately 1/2 yd - 3/4 yd (0.50 m - 0.75 m)					

Notions: Thread. **VIEW A, B & C:** 1" - 2" (2.5 cm - 5 cm) wide elastic - 1 yd (0.95 m) for sizes XS-S-M; 1 1/4 yd (1.15 m) for sizes L-XL.

JEANS PANEL: 1 yd (0.95 m) of 1" (2.5 cm) wide elastic.