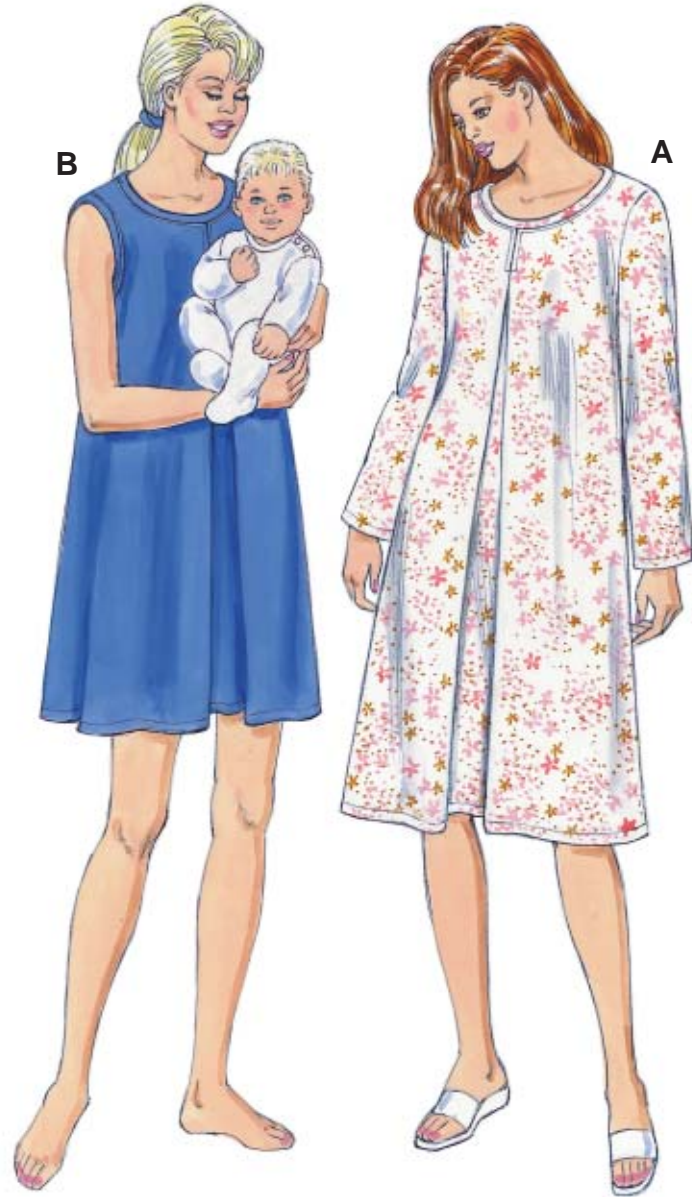
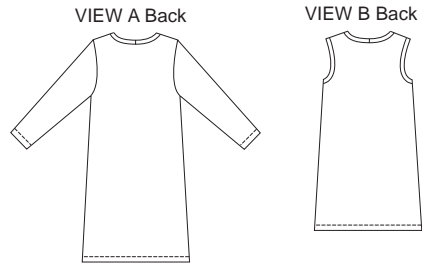


NURSING GOWNS

Misses' nursing gowns. Pullover gowns have scoop necklines with self-fabric neckband, and front pleat that conceals two nursing openings. View A has full-length sleeves. View B is sleeveless and armholes are finished with self-fabric bands.



KWIK•SEW®
3327 price

MISSES' NURSING GOWNS

Sizes: XS-S-M-L-XL

DESIGNED FOR STRETCH KNITS ONLY WITH 20% STRETCH

Suggested Fabrics: Interlock, single knit, pointelle jersey

Size	XS	S	M	L	XL	
Finished Length at Center Back						
View A	38 (96)	38 3/4 (98)	39 1/2 (100)	40 1/4 (102)	41 (104)	" (cm)
View B	32 (81)	32 3/4 (83)	33 1/2 (85)	34 3/4 (87)	35 (89)	" (cm)
Material Required: Fabric requirement allows for nap, one-way design or shading. Extra fabric may be needed to match design or for shrinkage.						
Fabric 60" (152 cm) Wide						
View A	2 1/2 (2.30)	2 5/8 (2.40)	2 5/8 (2.40)	2 7/8 (2.65)	3 1/8 (2.85)	yd (m)
View B	2 1/4 (2.10)	2 3/8 (2.20)	2 3/8 (2.20)	2 3/8 (2.20)	2 1/2 (2.30)	yd (m)

Notions: Thread, scrap piece of fusible interfacing.