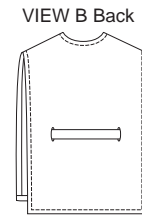
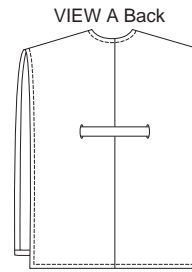




Misses' caftan and cover-up have open sides and stays in place with a self-fabric tie belt. Outside edges are finished with narrow hems, and neckline is finished with facing. View A has center front and center back seams.



KWIK•SEW®
3332 price

KWIK & EASY™

MISSES' CAFTANS
 Sizes: XS-S-M-L-XL

DESIGNED FOR LIGHTWEIGHT WOVEN FABRICS

Suggested Fabrics: Crepe, georgette, chiffon, voile, gauze, challis, silk, charmeuse, handkerchief linen

Size	XS	S	M	L	XL	
Finished Length at Center Back from Natural Waist						
View A	34 (86)	34 (86)	34 (86)	34 (86)	34 (86)	" (cm)
View B	15 3/4 (40)	16 1/2 (42)	17 1/4 (44)	18 (46)	18 3/4 (48)	" (cm)
Material Required: Fabric requirement allows for nap, one-way design or shading. Extra fabric may be needed to match design or for shrinkage.						
Fabric 60" (152 cm) Wide						
View A	3 (2.75)	3 (2.75)	3 1/4 (3.00)	3 1/4 (3.00)	3 3/8 (3.10)	yd (m)
View B	2 (1.85)	2 (1.85)	2 1/8 (1.95)	2 1/8 (1.95)	2 1/4 (2.10)	yd (m)
Fabric 45" (115 cm) Wide						
View A	5 7/8 (5.40)	5 7/8 (5.40)	6 (5.50)	6 (5.50)	6 1/8 (5.60)	yd (m)
View B	2 1/8 (1.95)	2 1/8 (1.95)	2 1/4 (2.10)	2 3/8 (2.20)	2 3/8 (2.20)	yd (m)
Fusible Interfacing 24" (60 cm) Wide						
View A & B	3/8 (0.35)	3/8 (0.35)	3/8 (0.35)	3/8 (0.35)	3/8 (0.35)	yd (m)
Notions: Thread, two sew-on snaps.						