

Misses' skirts and tops. Circular skirt has six panels, center back zipper and narrow waistband. View B skirt has contrast fabric extension at bottom edge. Close-fitting pullover tops have scoop necklines. View A neckline and armholes are finished with narrow self-fabric bands. View B neckline and armholes are finished with stretch lace.



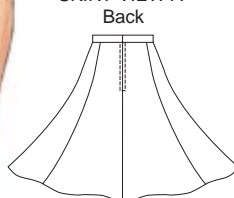
TOP VIEW A



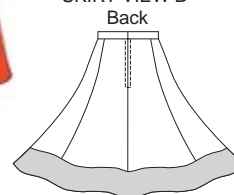
TOP VIEW B



SKIRT VIEW A



SKIRT VIEW B



SKIRTS & TOPS

KWIK•SEW®
price **3337**

SKIRTS DESIGNED FOR MEDIUM WEIGHT WOVEN FABRICS

Suggested Fabrics: Cotton, cotton types, linen, rayon & blends, denim, taffeta, silk types

TOP DESIGNED FOR STRETCH KNITS ONLY WITH 25% STRETCH

Suggested Fabrics: Interlock, textured knits, matte jersey, stretch lace

MISSES'
SKIRTS & TOPS
Sizes: XS-S-M-L-XL

Size	XS	S	M	L	XL	
Finished Length of Top at Center Back from Natural Neckline						
View A & B	20 1/2 (52)	21 (53)	21 3/4 (55)	22 1/2 (57)	23 (58)	" (cm)
Finished Length of Skirt						
View A & B	26 (67)	26 (67)	26 (67)	26 (67)	26 (67)	" (cm)
Finished Width of Skirt at Bottom Edge						
View A & B	102 (260)	105 (267)	108 (275)	111 (282)	115 (293)	" (cm)
Material Required: Fabric requirement allows for nap, one-way design or shading. Extra fabric may be needed to match design or for shrinkage.						
Fabric 60" (152 cm) Wide						
Top View A	7/8 (0.80)	7/8 (0.80)	7/8 (0.80)	7/8 (0.80)	7/8 (0.80)	yd (m)
Top View B	3/4 (0.70)	3/4 (0.70)	3/4 (0.70)	3/4 (0.70)	3/4 (0.70)	yd (m)
Skirt View A	1 3/4 (1.60)	1 3/4 (1.60)	1 3/4 (1.60)	2 1/2 (2.30)	2 1/2 (2.30)	yd (m)
Skirt View B Fabric	1 1/2 (1.40)	1 1/2 (1.40)	1 1/2 (1.40)	1 1/2 (1.40)	1 1/2 (1.40)	yd (m)
Contrast Fabric	3/4 (0.70)	3/4 (0.70)	7/8 (0.80)	7/8 (0.80)	7/8 (0.80)	yd (m)
Fabric 45" (115 cm) Wide						
Skirt View A	2 1/2 (2.30)	2 1/2 (2.30)	2 1/2 (2.30)	2 1/2 (2.30)	2 1/2 (2.30)	yd (m)
Skirt View B Fabric	1 1/2 (1.40)	1 1/2 (1.40)	1 1/2 (1.40)	1 1/2 (1.40)	1 1/2 (1.40)	yd (m)
*Contrast Fabric	1 1/2 (1.40)	1 1/2 (1.40)	1 1/2 (1.40)	1 5/8 (1.50)	1 5/8 (1.50)	yd (m)

*NOTE: 45" (115 cm) wide contrast fabric is cut on crosswise grain.

Fusible Interfacing 24" (60 cm) Wide

Skirt View A & B	7/8 (0.80)	1 (0.95)	1 (0.95)	1 1/8 (1.05)	1 1/4 (1.15)	yd (m)
------------------	------------	----------	----------	--------------	--------------	--------

Notions: Thread. **TOP View B:** 5/8" - 1" (1.5 cm - 2.5 cm) wide stretch lace - 2 yd (1.85 m) for size XS, 2 1/8 yd (1.95 m) for size S, 2 1/4 yd (2.10 m) for size M, 2 3/8 yd (2.20 m) for size L, 2 1/2 yd (2.30 m) for size XL. **SKIRT VIEW A & B:** One 7" (18 cm) zipper, one hook & eye set.