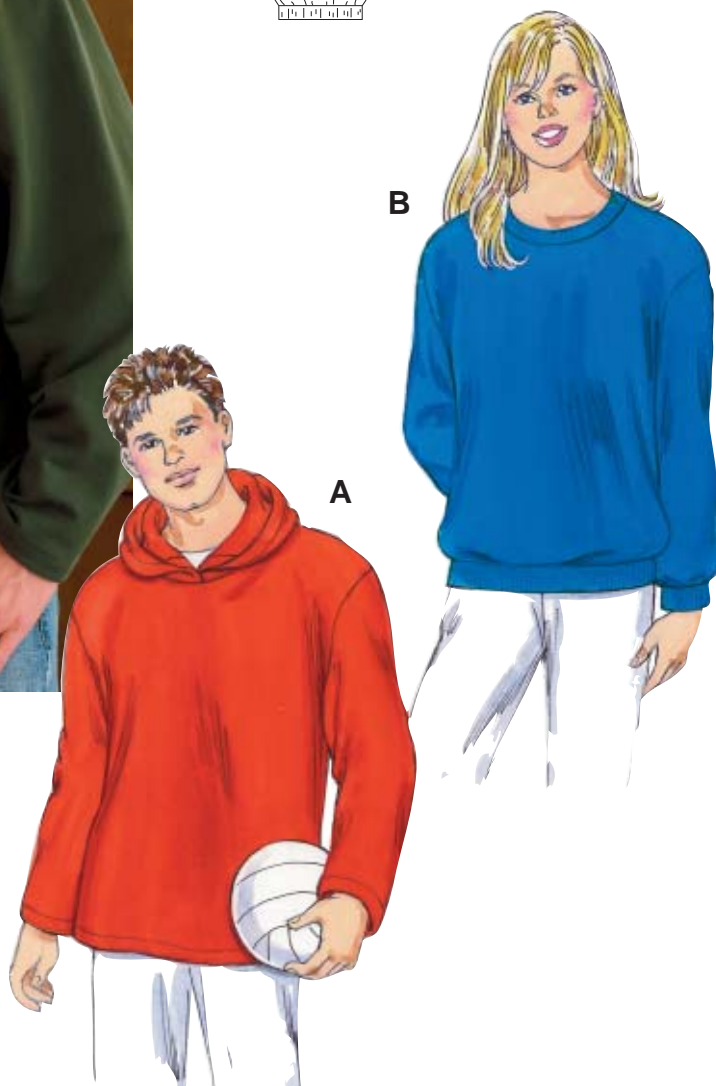
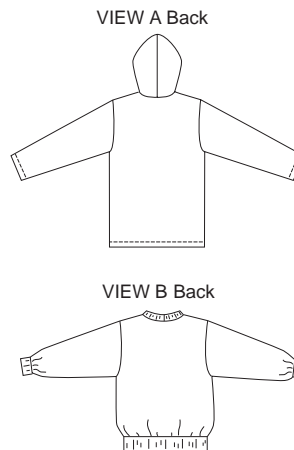
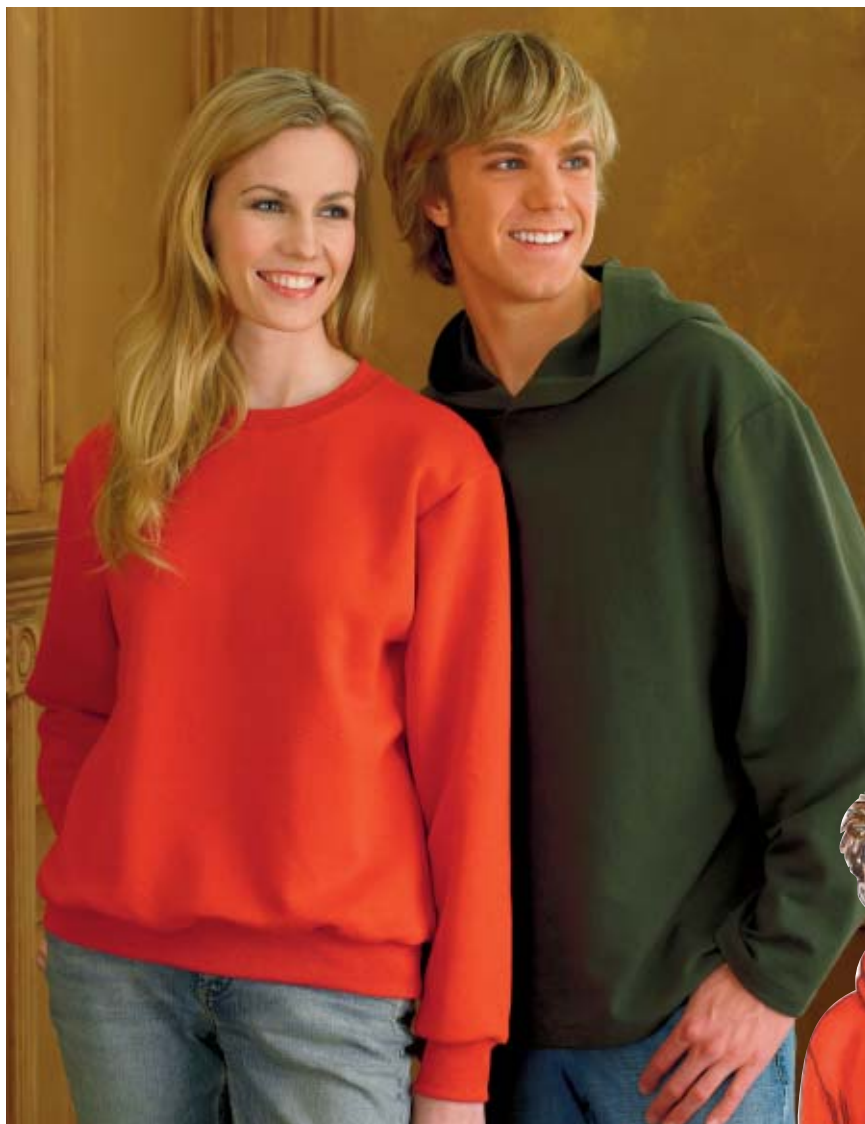


KWIK Start® LEARN-TO-SEW

ESPECIALLY DESIGNED FOR FIRST SEWING PROJECT!

KNIT TOPS

KWIK Start® LEARN-TO-SEW



Unisex pullover shirts have extended shoulders and long sleeves. View A has hood and hemmed bottom edge and sleeves. View B has neckband, waistband and cuffs from ribbing. Shirts are very easy to make and have special easy-to-follow sewing instructions.

KWIK•SEW®
3344 price

UNISEX SHIRTS
 Sizes: XS-S-M-L-XL

DESIGNED FOR STRETCH KNITS ONLY

Suggested Fabrics: Sweatshirt fleece, Polarfleece®, textured knits, French terry

Body Measurements:

| Size | XS | S | M | L | XL | |
|--|---|--------------|--------------|--------------|--------------|-----------|
| Height | Approximately 5'6" - 5'8" (167 cm - 172 cm) | | | | | All Sizes |
| Chest | 33 (84) | 36 (91) | 39 (99) | 42 (106) | 45 (114) | " (cm) |
| Finished Length at Center Back | | | | | | |
| View A & B | 24 (62) | 25 (64) | 26 (67) | 27 (69) | 28 (71) | " (cm) |
| Material Required: Fabric requirement allows for nap, one-way design or shading. Extra fabric may be needed to match design or for shrinkage. | | | | | | |
| Fabric 60" (152 cm) Wide | | | | | | |
| View A | 1 1/2 (1.40) | 1 5/8 (1.50) | 1 3/4 (1.60) | 2 (1.85) | 2 1/8 (1.95) | yd (m) |
| View B | 1 3/8 (1.30) | 1 3/8 (1.30) | 1 1/2 (1.40) | 1 1/2 (1.40) | 1 1/2 (1.40) | yd (m) |
| Ribbing 28" (70 cm) Wide | | | | | | |
| View B | 17 (43) | 17 (43) | 17 (43) | 17 (43) | 23 (58) | " (cm) |

Notions: Thread.