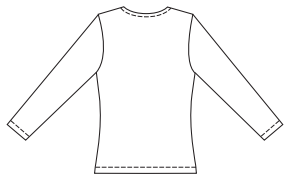
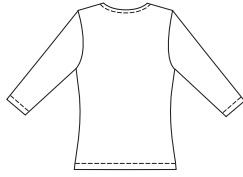


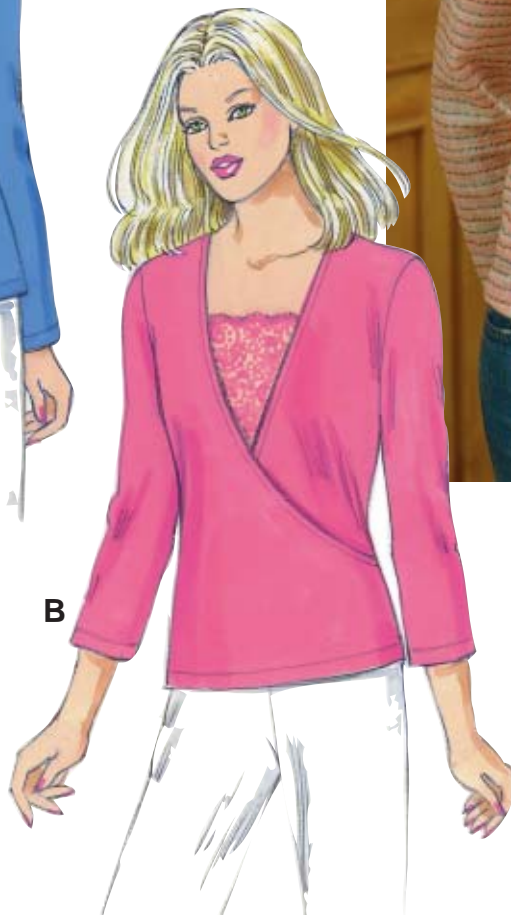
VIEW A Back



VIEW B Back



A



B



Misses' close-fitting pullover tops have contrast front insets attached at side seams. View A has full-length sleeves, front edges finished with narrow hems, and front is twisted. View B has lapped fronts, and three-quarter length sleeves. Inset can be made from stretch lace or contrast fabric.

KWIK•SEW®
price **3360**

DESIGNED FOR STRETCH KNITS ONLY WITH 25% STRETCH

Suggested Fabrics: Interlock, textured knits, jersey, stretch velour, sweater knits, stretch lace

MISSES' TOPS
Sizes: XS-S-M-L-XL

Size	XS	S	M	L	XL	
Finished Length at Center Back						
View A & B	20 3/4 (52)	21 1/2 (54)	22 1/4 (56)	23 (58)	23 3/4 (60)	" (cm)
Material Required: Fabric requirement allows for nap, one-way design or shading. Extra fabric may be needed to match design or for shrinkage.						
Fabric 60" (152 cm) Wide						
View A	1 1/2 (1.40)	1 1/2 (1.40)	1 1/2 (1.40)	1 5/8 (1.50)	1 5/8 (1.50)	yd (m)
View B	1 3/8 (1.30)	1 3/8 (1.30)	1 3/8 (1.30)	1 3/8 (1.30)	1 1/2 (1.40)	yd (m)
Contrast Fabric 25" (65 cm) Wide (minimum width)						
View A	3/4 (0.70)	3/4 (0.70)	3/4 (0.70)	3/4 (0.70)	3/4 (0.70)	yd (m)
View B	1/2 (0.50)	1/2 (0.50)	1/2 (0.50)	1/2 (0.50)	1/2 (0.50)	yd (m)

Notions: Thread, scrap piece of fusible interfacing.