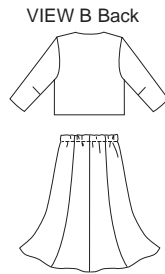
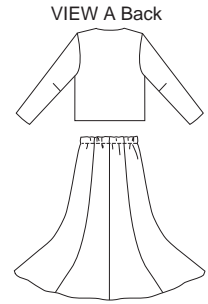




Misses' jackets, skirts and sash. Jackets have bust darts, and front edges and neckline finished with facings. View A has contrast fabric facings, no closure, and full-length sleeves. View B is cropped, has three-quarter length sleeves, curved front bottom edge, and a loop and button closure at neckline. Pull-on skirts have eight panels and elastic waist. Sash is cut on straight grain, stitched and turned.



KWIK•SEW®
3364 price

KWIK & EASY™

MISSES' JACKETS & SKIRTS DESIGNED FOR LIGHT TO MEDIUM WEIGHT WOVEN AND FIRM KNIT FABRICS
 Sizes: XS-S-M-L-XL Suggested Fabrics: Silk and rayon suitings, crepe, challis, double knit, linen, cotton types

| Size | XS | S | M | L | XL | |
|--|-------------------------|--------------|--------------|--------------|--------------|--------|
| Finished Length of Jacket at Center Back | | | | | | |
| View A | 19 1/2 (49) | 20 (50) | 20 3/4 (52) | 21 1/2 (54) | 22 (56) | " (cm) |
| View B | 14 3/4 (37) | 15 1/4 (38) | 15 3/4 (40) | 16 1/2 (42) | 17 1/4 (44) | " (cm) |
| Finished Length of Skirt | | | | | | |
| View A | 34" (86 cm) – All Sizes | | | | | |
| View B | 25" (63 cm) – All Sizes | | | | | |
| Material Required: Fabric requirement allows for nap, one-way design or shading. Extra fabric may be needed to match design or for shrinkage. | | | | | | |
| Fabric 60" (152 cm) Wide | | | | | | |
| View A Jacket & Skirt | 3 7/8 (3.55) | 3 7/8 (3.55) | 3 7/8 (3.55) | 3 7/8 (3.55) | 4 1/8 (3.80) | yd (m) |
| View A Contrast | 3/4 (0.70) | 3/4 (0.70) | 3/4 (0.70) | 3/4 (0.70) | 7/8 (0.80) | yd (m) |
| View B Jacket | 1 1/8 (1.05) | 1 1/8 (1.05) | 1 1/4 (1.15) | 1 1/4 (1.15) | 1 1/4 (1.15) | yd (m) |
| View B Skirt | 1 5/8 (1.50) | 1 5/8 (1.50) | 1 5/8 (1.50) | 1 5/8 (1.50) | 1 5/8 (1.50) | yd (m) |
| Sash | 3/8 (0.35) | 3/8 (0.35) | 5/8 (0.60) | 5/8 (0.60) | 5/8 (0.60) | yd (m) |
| Fabric 45" (115 cm) Wide | | | | | | |
| View A Jacket & Skirt | 4 1/2 (4.15) | 4 1/2 (4.15) | 4 7/8 (4.50) | 5 1/4 (4.80) | 5 1/2 (5.05) | yd (m) |
| View A Contrast | 3/4 (0.70) | 3/4 (0.70) | 3/4 (0.70) | 3/4 (0.70) | 7/8 (0.80) | yd (m) |
| View B Jacket | 1 5/8 (1.50) | 1 5/8 (1.50) | 1 3/4 (1.60) | 1 3/4 (1.60) | 1 7/8 (1.75) | yd (m) |
| View B Skirt | 2 3/8 (2.20) | 2 3/8 (2.20) | 2 3/8 (2.20) | 2 3/8 (2.20) | 2 3/8 (2.20) | yd (m) |
| Sash | 5/8 (0.60) | 5/8 (0.60) | 5/8 (0.60) | 5/8 (0.60) | 5/8 (0.60) | yd (m) |
| Fusible Interfacing 24" (60 cm) Wide | | | | | | |
| View A | 3/4 (0.70) | 3/4 (0.70) | 3/4 (0.70) | 3/4 (0.70) | 7/8 (0.80) | yd (m) |
| View B | 5/8 (0.60) | 5/8 (0.60) | 5/8 (0.60) | 5/8 (0.60) | 5/8 (0.60) | yd (m) |

Notions: Thread, 1 yd (0.95 m) of 3/4" (2 cm) wide elastic. VIEW B: One 3/4" (20 mm) button.