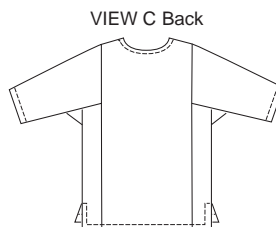
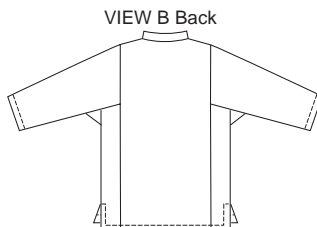
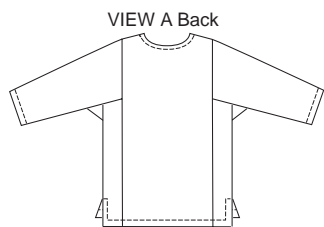


Women's tunic tops have side hemline slits. View A has V-neckline with optional trim and full-length sleeves. View B has mandarin collar, center front slit, and full-length sleeves. View C has center front slit and round neckline finished with self-fabric bias-cut binding, and three-quarter length sleeves.



PLUS SIZE

PLUS SIZES



KWIK-SEW
price **3371**

DESIGNED FOR LIGHT TO MEDIUM WEIGHT WOVEN FABRICS

Suggested Fabrics: Cotton, cotton types, linen, rayon, challis, gauze, silk, silk types

WOMEN'S TUNICS
Sizes: 1X-2X-3X-4X

Size	1X	2X	3X	4X	
Finished Length at Center Back					" (cm)
View A, B & C	28 1/2 (72)	29 (74)	29 1/2 (75)	30 (77)	
Material Required: Fabric requirement allows for nap, one-way design or shading. Extra fabric may be needed to match design or for shrinkage.					
Fabric 60" (152 cm) Wide					
View A & B	2 (1.85)	2 (1.85)	2 (1.85)	2 (1.85)	yd (m)
View C	1 7/8 (1.75)	1 7/8 (1.75)	1 7/8 (1.75)	1 7/8 (1.75)	yd (m)
Fabric 45" (115 cm) Wide					
View A	2 5/8 (2.40)	2 7/8 (2.65)	3 (2.75)	3 1/8 (2.85)	yd (m)
View B	2 1/2 (2.30)	2 7/8 (2.65)	3 (2.75)	3 1/8 (2.85)	yd (m)
View C	2 3/8 (2.20)	2 5/8 (2.40)	2 3/4 (2.55)	2 7/8 (2.65)	yd (m)
Fusible Interfacing 24" (60 cm) Wide					
View A or B	3/8 (0.35)	3/8 (0.35)	3/8 (0.35)	3/8 (0.35)	yd (m)
View C	1/8 (0.15)	1/8 (0.15)	1/8 (0.15)	1/8 (0.15)	yd (m)
Notions: Thread. VIEW A: Optional trim for neckline – 1 1/8 yd (1.05 m).					