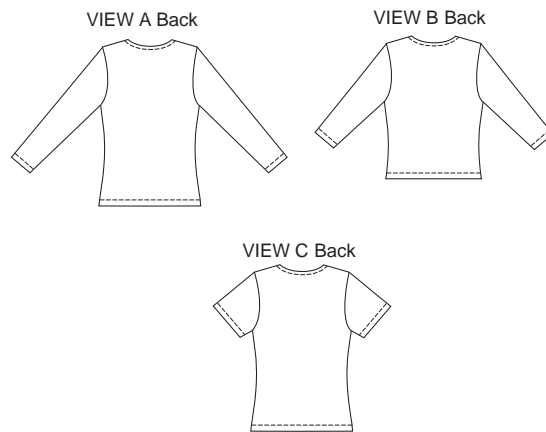


Misses' close-fitting pullover tops have twist fronts and deep V-neckline finished with narrow hem. View A has full-length sleeves. View B has three-quarter length sleeves and is cropped. View C has short sleeves.



KWIK & EASY™

KWIK•SEW®

price **3378**

DESIGNED FOR STRETCH KNITS ONLY WITH 25% STRETCH
Suggested Fabrics: Interlock, jersey, textured knits, stretch lace

MISSES' TOPS
Sizes: XS-S-M-L-XL

Size	XS	S	M	L	XL	
Finished Length at Center Back						
View A & C	20 (51)	20 1/2 (52)	21 1/4 (54)	22 (56)	22 3/4 (58)	" (cm)
View B	16 3/4 (42)	17 1/2 (44)	18 1/4 (46)	19 (48)	19 3/4 (50)	" (cm)
Material Required: Fabric requirement allows for nap, one-way design or shading. Extra fabric may be needed to match design or for shrinkage.						
Fabric 60" (152 cm) Wide						
View A	1 3/8 (1.30)	1 1/2 (1.40)	1 1/2 (1.40)	1 5/8 (1.50)	1 5/8 (1.50)	yd (m)
View B	1 1/8 (1.05)	1 1/4 (1.15)	1 1/4 (1.15)	1 3/8 (1.30)	1 3/8 (1.30)	yd (m)
View C	7/8 (0.80)	1 (0.95)	1 (0.95)	1 1/8 (1.05)	1 1/8 (1.05)	yd (m)
Notions: Thread, scrap piece of fusible interfacing.						